

AXIS
OFF-ROAD

ELECTRIC UTILITY

OWNERS MANUAL



PUBLISHED BY CHONGQING HUANSONG INDUSTRIES (GROUP) CO., LTD AND HISUN MOTORS CORP., USA. CHONGQING HUANSONG INDUSTRIES (GROUP) CO., LTD AND HISUN MOTORS CORP., USA HOLD THE COPY RIGHT. NO PUBLISHING OR REPOINTING WITHOUT PERMISSION.

 WARNING

Read, understand, and follow all of the instructions and safety precautions in this manual and on all product labels.

Failure to follow the safety precautions could result in serious injury or death.

INTRODUCTION

Congratulations on your purchase of the Electric Utility Vehicle (hereafter called EV). This Owner's / Operator's manual will provide you information regarding safe operation, operational instructions, maintenance and care. Fully understanding this manual and following all of the instructions herein will provide the knowledge needed to have safe and enjoyable EV operation.

For questions regarding this EV, please contact your local dealer.

IMPORTANT SAFETY MESSAGES

- **READ THIS MANUAL CAREFULLY AND COMPLETELY BEFORE OPERATING YOUR EV. MAKE SURE YOU UNDERSTAND ALL INSTRUCTIONS.**
- **PAY CLOSE ATTENTION TO THE WARNING AND CAUTION LABELS ON THE EV.**
- **NEVER OPERATE THE EV WITHOUT PROPER TRAINING OR INSTRUCTION.**
- **THIS EV SHOULD NOT BE RIDDEN BY ANYONE UNDER 16 YEARS OF AGE.**

TABLE OF CONTENTS

| | |
|--|-----------|
| Introduction | 5 |
| Important manual information..... | 5 |
| Vehicle Identification Numbers..... | 7 |
| Safety | 8 |
| Safe Riding Gear..... | 8 |
| Safety Labels and Locations | 9 |
| Seat Belt, tumbling and age Tags | 10 |
| Passenger/Tire Pressure Warning..... | 11 |
| Battery Warning Label | 12 |
| Battery Charging Warning | 13 |
| Warning and caution labels | 14 |
| Operator Safety | 16 |
| Features and Controls | 23 |
| Component Locations | 23 |
| Switch | 24 |
| meter | 25 |
| Indicator..... | 27 |
| Console | 28 |
| Direction Selector Switch..... | 29 |
| Failure code..... | 32 |
| Batteries | 41 |
| Main Power Connector | 43 |
| Checking the brake pedal..... | 44 |
| Seat Belts..... | 46 |
| Operation | 47 |
| Pre-Ride Inspection | 47 |
| Driving Procedure | 48 |
| Driving On Slippery Surfaces | 49 |
| Driving Uphill..... | 50 |
| Driving Downhill | 50 |
| Driving Through Water..... | 51 |
| Driving Over Obstacles..... | 51 |
| Driving in Reverse..... | 52 |
| Parking on an Incline | 52 |
| Hauling Cargo | 53 |
| Towing Loads..... | 55 |
| HOW TO RAISE THE CARGO BED..... | 56 |
| Checking wheel bolt torque..... | 58 |
| Maintenance | 59 |
| Periodic Maintenance Chart | 59 |
| Gear cases | 61 |
| Front Gear case | 62 |
| Brake Fluid | 63 |
| Steering Wheel Inspection | 64 |
| Front and Rear Shock Adjustment | 64 |
| Tires | 67 |
| Battery..... | 68 |

| | |
|-----------------------------------|-----------|
| Cleaning and Storage..... | 71 |
| Storing the Vehicle | 74 |
| Specifications Table | 75 |

INTRODUCTION

IMPORTANT MANUAL INFORMATION

FAILURE TO FOLLOW THE WARNINGS CONTAINED IN THIS MANUAL CAN RESULT IN SERIOUS INJURY OR DEATH.

Particularly important information is distinguished in this manual by the following notations:



The Safety Alert Symbol means **ATTENTION!**
YOUR SAFETY IS INVOLVED!



Failure to follow **WARNING** instructions could result in severe injury or death to the machine operator, bystander or a person inspecting or repairing the machine.

CAUTION:

A CAUTION indicates special precautions that must be taken to avoid damage to the machine.

NOTE: **A NOTE** provides key information to make procedures easier clearer.

INTRODUCTION

WARNING

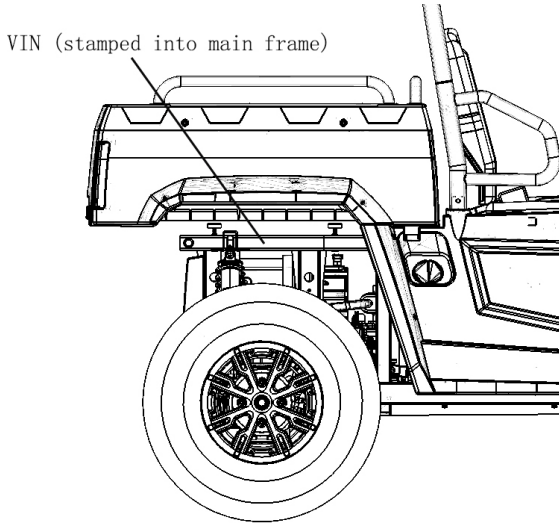
Failure to follow the warnings contained in this manual can result in severe injury or death. Your Electric Utility is not a toy and can be hazardous to operate. This vehicle handles differently than other vehicles, such as cars, trucks or other off-road vehicles. A collision or rollover can occur quickly, even during routine maneuvers like turning, or driving on hills or over obstacles, if you fail to take proper precautions.

- Read this owner's manual and review the safety DVD that came with your vehicle. A free extra copy of the DVD can be obtained by contacting your local HSUN dealer. Understand all safety warnings, precautions and operating procedures before operating the vehicle. Keep this manual with the vehicle.
- This vehicle is an **ADULT VEHICLE ONLY**. You **MUST** be at least age 16 and have a valid driver's license to operate this vehicle.
- No person under the age of 12 may ride as a passenger in this vehicle. All riders must be able to sit with backs against the seat, both feet flat on the floor and both hands on the steering wheel (if driving) or on a passenger hand hold.
- Never permit a guest to operate this vehicle unless the guest has read this manual and all product labels.
- Always wear a helmet, eye protection, gloves, long-sleeve shirt, long pants and over-the-ankle boots.
- Never use this vehicle with drugs or alcohol, as these conditions impair judgment and reduce operator reaction time.

INTRODUCTION

Vehicle Identification Numbers

Record your vehicle's identification numbers in the spaces provided. Remove the spare key and store it in a safe place.



Vehicle Model Number: _____

Frame VIN: _____

Motor Serial Number (on side of motor): _____

SAFETY

Safe Riding Gear

The driver and all passengers must wear helmet, eye protection, gloves, long-sleeve shirt, long pants, over-the-ankle boots and seat belt at all times. Protective gear reduces the chance of injury.

Helmet

Wearing a helmet can prevent a severe head injury. Whenever riding this HSUN vehicle, always wear a helmet that meets or exceeds established safety standards.

Approved helmets in the USA and Canada bear a U.S. Department of Transportation (DOT) label.

Approved helmets in Europe, Asia and Oceania bear the ECE 22.05 label. The ECE mark consists of a circle surrounding the letter E, followed by the distinguishing number of the country which has granted approval. The approval number and serial number will also be displayed on the label.

Eye Protection

Do not depend on eyeglasses or sunglasses for eye protection. Whenever riding this HSUN vehicle, always wear shatterproof goggles or use a shatterproof helmet face shield. HSUN recommends wearing approved Personal Protective Equipment (PPE) bearing markings such as VESC 8, V-8, Z87.1, or CE. Make sure protective eye wear is kept clean.

Gloves

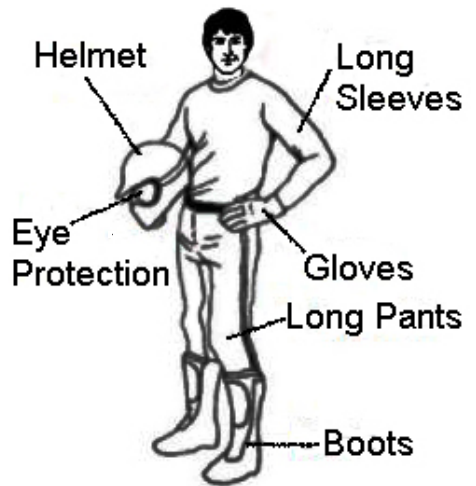
Wear gloves for comfort and for protection from sun, cold weather and other elements.

Boots

Wear sturdy over-the-ankle boots for support and protection. Never ride a HSUN vehicle with bare feet or sandals.

Clothing

Wear long sleeves and long pants to protect arms and legs.



SAFETY

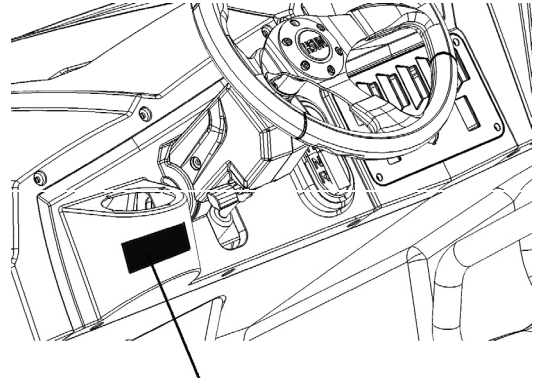
Safety Labels and Locations

Warning labels have been placed on the vehicle for your protection. Read and follow the instructions of the labels on the vehicle carefully. If any of the labels depicted in this manual differ from the labels on your vehicle, always read and follow the instructions of the labels on the vehicle. If any label becomes illegible or comes off, contact your HSUN dealer to purchase a replacement. Replacement safety labels are provided by HSUN at no charge. The part number is printed on the label.

Proper Use Warning

Require Proper Use of Your Vehicle Do your part to prevent injuries:

- Do not allow careless or reckless driving.
- Make sure operators are 16 or older with a valid driver's license.
- Do not let people drive or ride after using alcohol or drugs.
- Do not allow operation on public roads (unless designated for off-highway vehicle access) - collisions with cars and trucks can occur.
- Do not exceed seating capacity: 2 occupants.



Proper Use Warning

SAFETY

Safety Labels and Locations

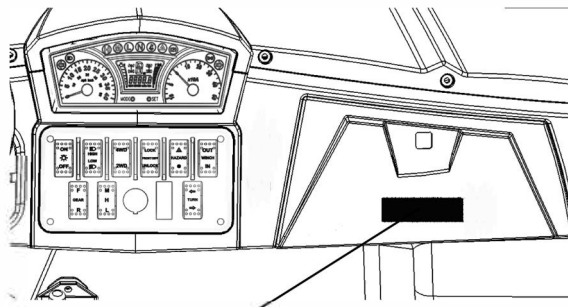
Seat Belt, Roll Over & Age

WARNING

Improper vehicle use can result in SEVERE INJURY or DEATH

Be Prepared

- Fasten seat belts.
- Wear an approved helmet and protective gear.
- ALWAYS use vehicle cab nets and/or doors.
- Each rider must be able to sit with back against seat, feet flat on the floor, and hands on steering wheel or hand holds. Stay completely inside the vehicle.



Seat Belt, Roll Over & Age Restrictions

Driver Responsibility

Avoid loss of control and rollovers:

- Avoid abrupt maneuvers, sideways sliding, skidding or fishtailing, and never do donuts.
- Slow down before making a turn.
- Avoid hard acceleration when turning, even from a stop.
- Plan for hills, rough terrain, ruts and other changes in traction and terrain. Avoid paved surfaces.
- Avoid sidehilling (riding across slopes).



Be Sure Riders Pay Attention and Plan Ahead

If you think or feel the vehicle may tip or roll, reduce your risk to injury:

- Keep a firm grip on the steering wheel or hand holds and brace yourself.
- Do not put any part of your body outside of the vehicle for any reason.

LOCATE AND READ OWNER'S MANUAL. FOLLOW ALL INSTRUCTIONS AND WARNINGS. ALWAYS REVIEW SAFETY VIDEO AND TAKE ROHVA TRAINING (rohva.org).

Rollovers have caused severe injuries and death, even on flat, open areas.



SAFETY

Safety Labels and Locations

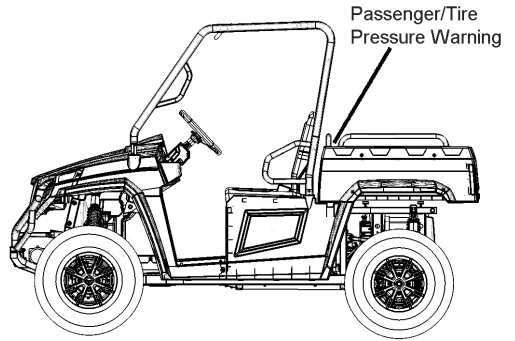
Passenger/Tire Pressure Warning

- Passengers can be thrown off. This can cause serious injury or death.
- Never carry passengers in cargo box.

WARNING

IMPROPER TIRE PRESSURE OR OVERLOADING CAN CAUSE LOSS OF CONTROL RESULTING IN SERIOUS INJURY OR DEATH.

- Reduce speed and allow greater distance for braking when carrying cargo.
- Overloading or carrying tall, off-center, or unsecured loads will increase your risk of losing control. Loads should be centered and carried as low as possible in box.
- For stability on rough or hilly terrain, reduce speed and cargo.



| Item | Specification |
|--|--|
| MAXIMUM CARGO BOX LOAD | 500 lbs.(227 kg) |
| TIRE PRESSURE IN PSI (KPa) | FRONT 20psi (138)KPa REAR 20psi (138KPa) |
| MAXIMUM WEIGHT CAPACITY INCLUDES WEIGHT OF OPERATOR, PASSENGER, CARGO AND ACCESSORIES | 855 lbs. (389 kg) |
| Read Operation & Maintenance Manual for more detailed loading information. | |

- Be careful if load extends over the side of the box.

Safety Labels



SAFETY

Battery Warning Label

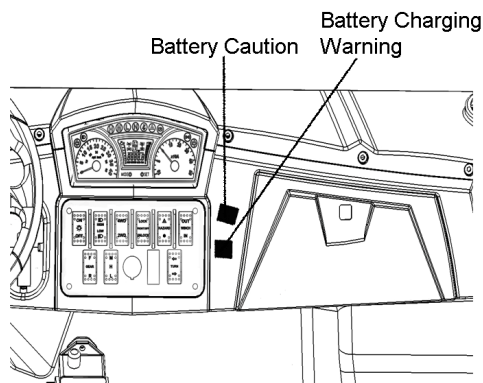
- The batteries installed in your EV are considered "Dry Cell" batteries. They use a sulfuric paste instead of sulfuric liquid. However, care & caution should be taken when handling the batteries.
- SULFURIC ACID in batteries will burn skin, eyes, and clothing.
- In event of injury, flush with water and call physician immediately.
- HIGH VOLTAGE CABLES and terminals are contained within this compartment. Improper contact between battery terminals can result in electrical shorts. ELECTRICAL SHORTS can result in burns.
- Do not use high pressure water to wash the battery compartment. Damage to the batteries may result.
- Tampering with or unauthorized modification of this unit could result in serious personal injury, will void the warranty, and can result in permanent damage to the vehicle.
- Refer to your Owner's Manual or contact your local HSUN dealer with any questions.



SAFETY

Safety Labels and Locations

- Explosive gases are released when batteries are charged. Keep sparks, flames and cigarettes away. Shield eyes when working near batteries.
- Do not charge batteries in a non-ventilated enclosed area or near flammable materials.
- Do not attempt to charge frozen, leaking, or damaged batteries.
- Connect battery charger to properly rated electrical receptacle with GFCI.
- Do not charge with storage or weather cover on vehicle or with the cab enclosure doors closed, as fire and explosion are possible.
- Refer to Owner's Manual or contact your local HSUN dealer with any questions.



TO MAXIMIZE BATTERY LIFE

1. **OPPORTUNITY CHARGE THE VEHICLE**
 - a. When vehicle is not in use, plug the vehicle into the properly rated electrical receptacle with GFCI circuit.
2. **Inspect battery connections regularly**
 - a. Always check to ensure battery terminals are secure. Battery manufacturer recommends torquing to hardware to 10 ft. lbs.
3. **Always use the charger supplied with the vehicle.**
4. **Never use an extension cord over 25 ft. in length.**
5. **Inspect cord at each use for damage to the plugs and wires prior to using.**
6. **Always use a cord capable of handling 20 amps of electrical current.**

SAFETY

Battery Caution

CAUTION

Do not drive through water above the floor of the vehicle. Battery damage will occur.

Batteries require regular maintenance.

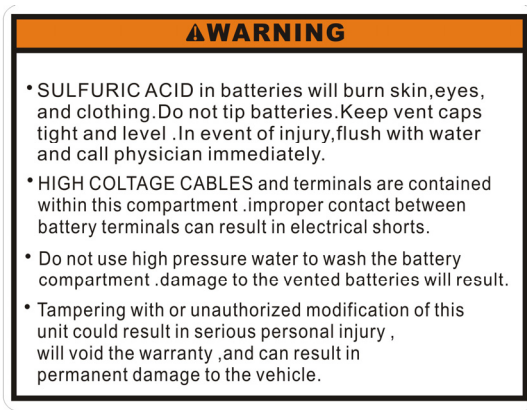
Failure to maintain batteries in accordance with the owners manual can result in battery damage, vehicle malfunction, fire and/or severe injury or death.

Max towing speed 10 MPH (16 km/h) - drivetrain damage will occur if towed faster than 10 MPH (16 km/h).

Set parking brake before leaving vehicle.

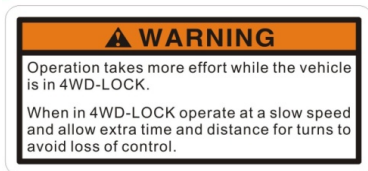
Turn key to "Off" position and remove when not in use.

When towing vehicle, turn key to "Off" position.



Warning and caution labels

(1)



(2)



(3)

- Max towing weight: 363kg (800lbs)
- Max tongue weight: 50kg (110lbs)

(4)



(5)

⚠ WARNING

- TO AVOID PERSONAL INJURY DUE TO LOSS OF STEERING CONTROL:
- Do not depress the differential lock switch at high speed.

(6)

⚠ WARNING

Severe INJURY or DEATH can result if you ignore the following guidelines:

- Maximum load in cargo bed is 350lbs (159kg)
- Never carry passengers in cargo bed. Passengers can be thrown off causing serious injury or death.
- Cargo can affect handling and stability. Read Owner's Manual before loading or towing.
- When operating with cargo or towing a trailer always reduce speed, allow more room to stop and avoid hills and rough terrain.
- Be sure cargo is secured since a loose load can change vehicle handling.
- Keep weight in the cargo bed centered and as low and far forward as possible. Top-heavy loads increase the risk of rollover.

(7)

⚠ WARNING

Improper Use of Off-Highway Vehicles Can Cause Severe Injury or Death

Be Prepared

- Fasten seat belts.
- Wear an approved helmet and protective gear.
- Each rider must be able to sit with back against seat, feet flat on floor (and foot rests), and hands on steering wheel or handhold(s), where equipped). Stay completely inside the vehicle.

Drive Responsibly

Avoid loss of control and rollovers:

- Avoid abrupt maneuvers, sideways sliding, skidding, or fishtailing, and never do donuts.
- Slow down before entering a turn.
- Avoid hard acceleration when turning, even from a stop.
- Plan for hills, rough terrain, ruts, and other changes in traction and terrain. Avoid paved surfaces.
- Avoid side hilling (riding across slopes).

Be Sure Riders Pay Attention and Plan Ahead

If you think or feel the vehicle may tip or roll, reduce your risk to injury:

- Keep a firm grip on the steering wheel or handholds and brace yourself.
- Do not put any part of your body outside of the vehicle for any reason.

Require Proper Use of Your Vehicle

Do your part to prevent injuries:

- Do not allow careless or reckless driving.
- Make sure operators are 16 or older with a valid driver's license.
- Do not let people drive or ride after using alcohol or drugs.
- Do not allow operation on public roads (unless designated for off-highway vehicle access)--collisions with cars and trucks can occur.
- Do not exceed seating capacity: 1 passenger.

[Locate and] Read [Owner's Manual]
Follow All Instruction and Warnings
[Reserved for Reference to Other Sources of Safety Information]




Rollovers have caused severe injuries and death, even on flat, open areas.



(8)

⚠ WARNING



- Keep hands and body safely away from closing bed..
- NEVER operate the vehicle with the bed up.

SAFETY

Operator Safety

WARNING

Serious injury or death can result if you do not follow these instructions and procedures, which are outlined in further detail within your owner's manual.

- Read this entire manual and all labels carefully. Follow the operating procedures described.
- Never allow anyone under the age of 16 to operate this vehicle and never allow anyone without a valid driver's license to operate this vehicle.
- Do not carry a passenger until you have at least two hours of driving experience with this vehicle.
- No person under the age of 12 may ride as a passenger in this vehicle. All riders must be able to sit with backs against the seat, both feet flat on the floor and both hands on the steering wheel (if driving) or on a passenger hand hold.
- The driver and all passengers must wear helmet, eye protection, gloves, long-sleeve shirt, long pants, over-the-ankle boots and seat belt at all times.
- Always keep hands and feet inside the vehicle at all times. Always keep both hands on the steering wheel and both feet on the floorboards of the vehicle during operation.
- Never permit a guest to operate this vehicle unless the guest has read this manual and all product labels.
- To reduce rollover risk, be especially careful when encountering obstacles and slopes and when braking on hills or during turns.
- This vehicle is for off-road use only. Never operate on public roads (unless marked for off-road use). Always avoid paved surfaces.
- Never consume alcohol or drugs before or while operating this vehicle.
- Never operate at excessive speeds. Always travel at a speed proper for the terrain, visibility and operating conditions, and your experience.
- Never attempt jumps or other stunts.
- Always inspect the vehicle before each use to make sure it's in safe operating condition. Always follow the inspection procedures described in this manual.
- Always travel slowly and use extra caution when operating on unfamiliar terrain. Be alert to changing terrain.
- Never operate on excessively rough, slippery or loose terrain.
- Always follow proper procedures for turning. Practice turning at slow speeds before attempting to turn at faster speeds. Never turn at excessive speeds.
- Always have this vehicle checked by an authorized HSUN dealer if it has been involved in an accident.
- Never operate this vehicle on hills too steep for the vehicle or for your abilities. Practice on smaller hills before attempting larger hills.
- Never allow unauthorized persons to repair this UTV. This may affect vehicle performance and cause injury.
- Do not wear loose articles of clothing during operation, as these can be drawn into moving parts on the vehicle and could cause a severe injury to occur.

SAFETY

Operator Safety

- Always follow proper procedures for climbing hills as described in this manual. See page 50. Check the terrain carefully before attempting to climb a hill. Never climb hills with excessively slippery or loose surfaces. Never go over the top of a hill at high speed.
- Always follow the proper procedures outlined in this manual for traveling downhill and for braking on hills. See page 50. Check the terrain carefully before descending a hill. Never travel downhill at high speed. Avoid going downhill at an angle, which would cause the vehicle to lean sharply to one side. Travel straight down the hill where possible.
- Always check for obstacles before operating in a new area. Never attempt to operate over large obstacles such as large rocks or fallen trees. Always follow the proper procedures outlined in this manual when operating over obstacles. See page 51.
- Always be careful of skidding or sliding. On slippery surfaces such as ice, travel slowly and exercise caution to reduce the chance of skidding or sliding out of control.
- Never operate your vehicle in fast-flowing water or in water deeper than that specified in this manual. See page 37. Wet brakes may have reduced stopping ability. Test your brakes after leaving water. If necessary, apply them lightly several times to let friction dry out the pads.
- Always be sure there are no obstacles or people behind your vehicle when operating in reverse. When it's safe to proceed in reverse, move slowly. Avoid turning at sharp angles in reverse.
- Always use the proper size and type of tires specified in this manual. Always maintain proper tire pressure as specified on safety labels.
- Never modify this vehicle through improper installation or use of non- HSUN -approved accessories.
- Never exceed the stated load capacity for this vehicle. Cargo should be properly distributed and securely attached. Reduce speed and follow the instructions in this manual for hauling cargo or pulling a trailer. Allow a greater distance for braking.
- Always set the park brake and remove the key when leaving the vehicle unattended.

Equipment Modifications

Never install any accessory that grounds to the vehicle chassis. The chassis is a floating ground to protect against electrical short circuits and hazards.

Do not install any non- HSUN -approved accessory or modify the vehicle for the purpose of increasing speed or power. Any modifications or installation of non- HSUN S-approved accessories could create a substantial safety hazard and increase the risk of bodily injury.

The warranty on your HSUN vehicle will be terminated if any non- HSUN -approved equipment and/or modifications have been added to the vehicle that increase speed or power.

The addition of certain accessories, including (but not limited to) mowers, blades, tires, sprayers, or large racks, may change the handling characteristics of the vehicle. Use only HSUN -approved accessories, and familiarize yourself with their function and effect on the vehicle.

SAFETY

Operator Safety

WARNING

Failure to operate the EV properly can result in a collision, loss of control, accident or rollover, which may result in serious injury or death. Heed all safety warnings outlined in this section of the owner's manual. See the OPERATION section of the owner's manual for proper operating procedures.

Age Restrictions

This vehicle is an ADULT VEHICLE ONLY. NEVER operate this vehicle if you are under age 16 and NEVER operate without a valid driver's license.

Never operate with a passenger under the age of 12. All riders must be able to sit with backs against the seat, both feet flat on the floor and both hands on the steering wheel (if driving) or on a passenger hand hold.

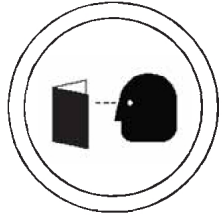


Operating Without Instruction

Operating this vehicle without proper instruction increases the risk of an accident. The operator must understand how to operate the vehicle properly in different situations and on different types of terrain.

All operators must read and understand the Owner's Manual and all warning and instruction labels before operating the vehicle.

All operators should review the safety DVD provided with this vehicle and take a ROHVA training course (www.rohva.org).



Using Alcohol or Drugs

Operating the vehicle after consuming alcohol or drugs could adversely affect operator judgment, reaction time, balance and perception.

Never drink alcohol or use drugs or medications before or while operating this vehicle.



Seat Belts

Riding in this vehicle without wearing the seat belt increases the risk of serious injury in the event of rollover, loss of control, other accident or sudden stop. Seat belts may reduce the severity of injury in these circumstances.

All riders *must* wear seat belts at all times.

Protective Apparel

Riding in this vehicle without wearing an approved helmet and protective eyewear increases the risk of a serious injuries in the event of an accident.

Operator and passenger must always wear an approved helmet that fits properly and eye protection (goggles or face shield).

SAFETY

Operator Safety

Ventilation When Charging Batteries

Failure to provide adequate ventilation while charging batteries can result in an explosion.

Volatile hydrogen gas is emitted during charging and may accumulate in pockets at the ceiling.

- Always ensure a minimum of 5 air changes per hour in the charging area.
- Always remove any storage covers from the vehicle and open any cab doors (if equipped) before charging.

Failure to Inspect Before Operating

Failure to inspect and verify that the vehicle is in safe operating condition before operating increases the risk of an accident. Always perform the pre-ride inspection before each use of your Electric Utility to make sure it's in safe operating condition. See page 47.

Always follow all inspection and maintenance procedures and schedules described in this owner's manual. See page 59.

Operating With a Load on the Vehicle

The weight of both cargo and passengers impacts vehicle operation. For your safety and the safety of others, carefully consider how your vehicle is loaded and how to safely operate the vehicle. Follow the instructions in this manual for loading, tire pressure, gear selection and speed.

- **Do not exceed vehicle weight capacities.** The vehicle's maximum weight capacity is listed in the specifications section of this manual and on a label on the vehicle. When more passenger weight is added, cargo weight may need to be reduced accordingly.
- The recommended tire pressures are listed in the specifications section of this manual and on a label on the vehicle.

Always follow these guidelines:

• Be careful, slow down and check tyre pressure under the following 5 conditions:

- Passenger and/or cargo exceeds half the maximum weight capacity.
- Operating in rough terrain.
- Operating over obstacles.
- Climbing an incline.
- Towing.

Operating a Damaged Vehicle

Operating a damaged vehicle can result in an accident. After any rollover or accident, have a qualified service dealer inspect the entire machine for possible damage, including (but not limited to) seat belts, rollover protection devices, brakes, accelerator, steering system and electrical system.

Operating at Excessive Speeds

Operating this vehicle at excessive speeds increases the operator's risk of losing control. Always operate at a speed that's appropriate for the terrain, the visibility and operating conditions, your skills and experience and your passengers' skills and experience.

SAFETY

Operator Safety

Operating on Pavement

This vehicle's tires are designed for off-road use only, not for use on pavement. Operating this vehicle on paved surfaces (including sidewalks, paths, parking lots and driveways) may adversely affect the handling of the vehicle and may increase the risk of loss of control and accident or rollover. Avoid operating the vehicle on pavement. If it's unavoidable, travel slowly, travel short distances and avoid sudden turns or stops.

Operating on Public Roads

Operating this vehicle on public streets, roads or highways could result in a collision with another vehicle. Never operate this vehicle on any public street, road or highway, including dirt and gravel roads (unless designated for off-highway use). In some areas it's unlawful to operate this vehicle on public streets, roads and highways.

Turning Improperly

Turning improperly could cause loss of traction, loss of control, accident or rollover. Always follow proper procedures for turning as described in this owner's manual. Never turn abruptly or at sharp angles. Never turn at high speeds. Practice turning at slow speeds before attempting to turn at faster speeds.

Jumps and Stunts

Attempting wheelies, jumps and other stunts increases the risk of an accident or rollover. Never attempt wheelies, jumps, or other stunts. Avoid exhibition driving.

Operating in Unfamiliar Terrain

Failure to use extra caution when operating on unfamiliar terrain could result in an accident or rollover. Unfamiliar terrain may contain hidden rocks, bumps, or holes that could cause loss of control or rollover. Travel slowly and use extra caution when operating on unfamiliar terrain. Always be alert to changing terrain conditions.

Operating on Slippery Terrain

Failure to use extra caution when operating on excessively rough, slippery or loose terrain could cause loss of traction, loss of control, accident or rollover. Do not operate on excessively slippery surfaces. Always slow down and use additional caution when operating on slippery surfaces. Skidding or sliding due to loss of traction can cause loss of control or rollover (if tires regain traction unexpectedly). Always follow proper procedures for operating on slippery surfaces as described in this owner's manual. See page 49.

SAFETY

Operator Safety

Improper Hill Climbing

Climbing hills improperly can cause loss of control or vehicle rollover. Always follow proper procedures for climbing hills as described in this owner's manual. See page 50.

Descending Hills Improperly

Improperly descending a hill could cause loss of control or rollover. Always follow proper procedures for traveling down hills as described in the owner's manual. See page 50.

Stalling While Climbing a Hill

Stalling or rolling backwards while climbing a hill could cause a rollover. Always maintain a steady speed when climbing a hill.

If all forward speed is lost:

- Apply the brakes.
- Switch to reverse and slowly allow the vehicle to roll straight downhill while applying light brake pressure to control speed.

If you begin rolling downhill:

- Never press the accelerator.
- Apply the brakes gradually until the vehicle is fully stopped.
- Switch to reverse and slowly allow the vehicle to roll straight downhill while applying light brake pressure to control speed.

Improper Tire Maintenance

Operating this vehicle with improper tires or with improper or uneven tire pressure could cause loss of control or accident. Always use the size and type of tires specified for your vehicle. Always maintain proper tire pressure as described in the owner's manual and on safety labels.

Operating on Frozen Bodies of Water

Severe injury or death can result if the vehicle and/or the operator fall through the ice. Never operate the vehicle on a frozen body of water unless you have first verified that the ice is sufficiently thick to support the weight and moving force of the vehicle, you and your passengers, and your cargo, together with any other vehicles in your party.

Always check with local authorities and residents to confirm ice conditions and thickness over your entire route. Vehicle operators assume all risk associated with ice conditions on frozen bodies of water.

SAFETY

Operator Safety

Unauthorized Use of the Vehicle

Leaving the keys in the vehicle can lead to unauthorized use of the vehicle by someone under the age of 16, without a drivers license, or without proper training. This could result in an accident or rollover. Always remove the key when the vehicle is not in use.

Hot Drive Systems

The motor and controller are very hot during and after use of the vehicle. Hot components can cause burns and fire. Do not touch hot drive system components. Always keep combustible materials away from the drive system. Use caution when traveling through tall grass, especially dry grass. Always inspect areas near the drive system after driving through tall grass, weeds, brush and other tall ground cover. Promptly remove any grass or debris clinging to the vehicle.

Precautions During Maintenance

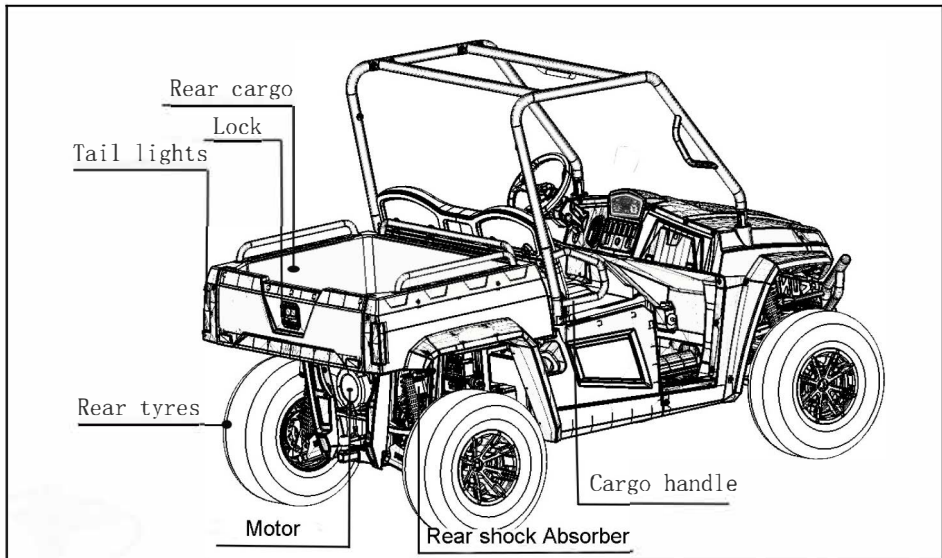
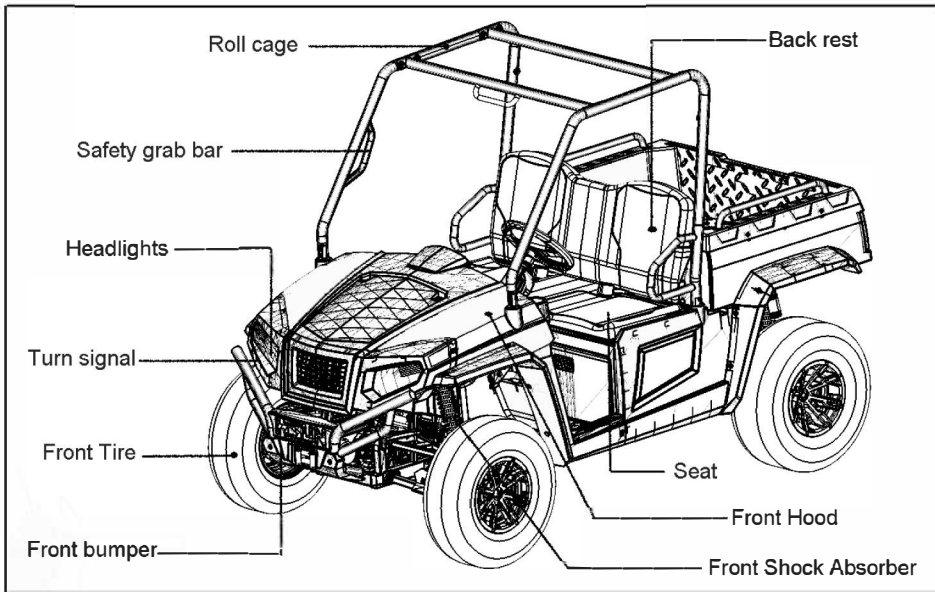
WARNING! Do not work in or near the battery compartment or on any other electrical component of the vehicle while charging the batteries. Always disconnect the main power connector before servicing or unplugging any electrical components. See page 43.

Always follow all safety instructions in the maintenance portion of this owner's manual, as well as the following:

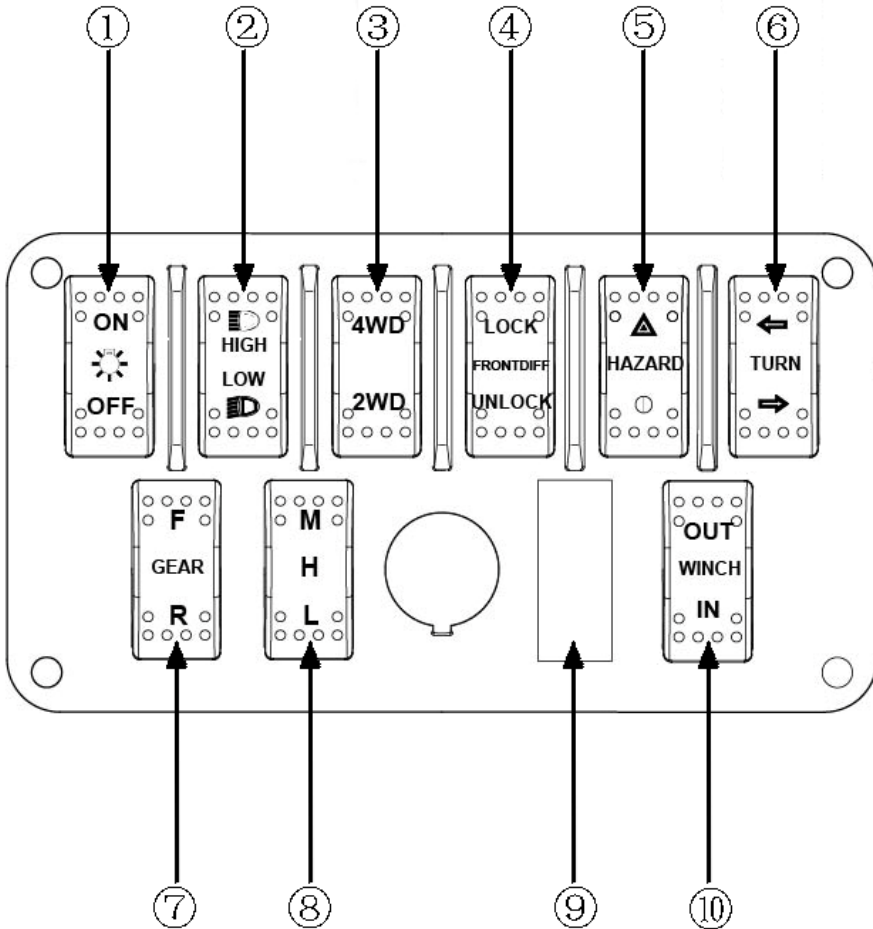
- Make sure the vehicle is properly immobilized before beginning any maintenance.
- Always block the chassis securely before working under the vehicle.
- Turn the key off and remove it from the vehicle.
- Insulate any tools used within the battery area to prevent sparks or battery explosion caused by shorting the battery terminals or wiring. Remove the batteries, or cover the exposed terminals with an insulating material.

FEATURES AND CONTROLS

Component Locations



FEATURES AND CONTROLS

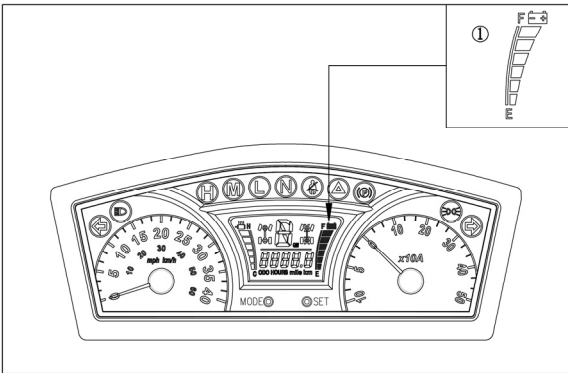


Switch Functions

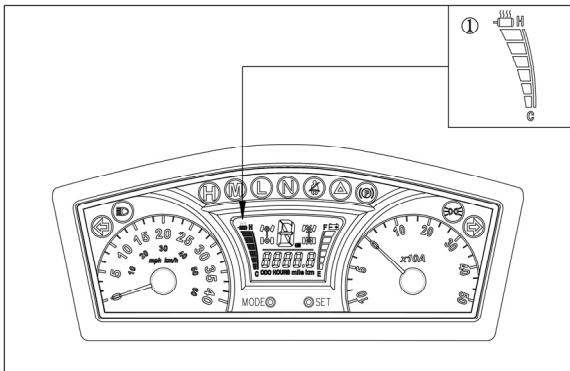
- ① Headlight switch
- High / Low Beam switch
- ③ 4WD drive switch
- ④ Locking front axle differential switch
- Hazard light switch
- ⑥ Turn Signal switch
- ⑦ Directional Drive switch
- Low / Mid / High Range switch
- ⑨ Auxillary switch
- ⑩ Winch switch

FEATURES AND CONTROLS

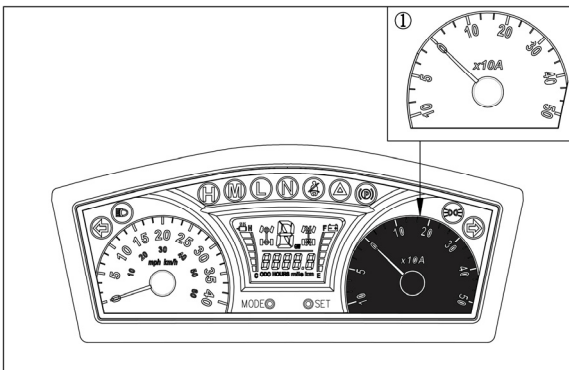
Instrument Panel Readout



① Battery State of Charge Indicator

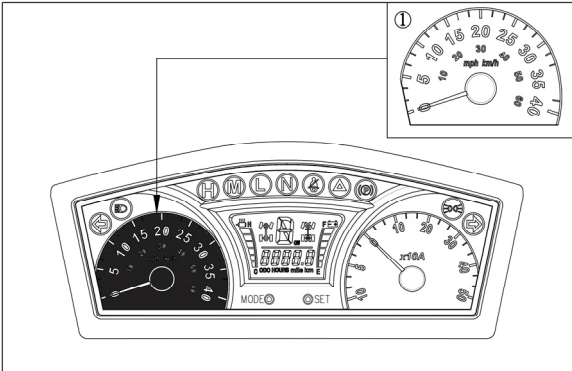


① Motor Temperature

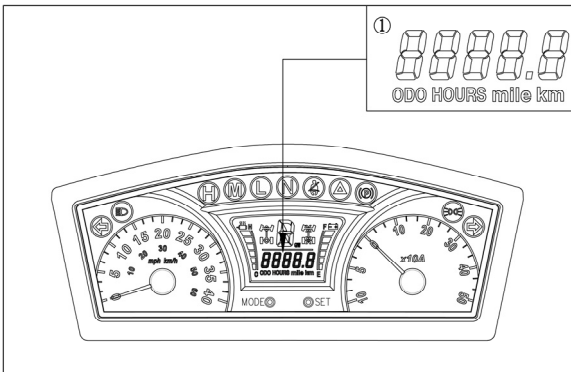


① Motor RPM & Generative State

FEATURES AND CONTROLS



① Speedometer



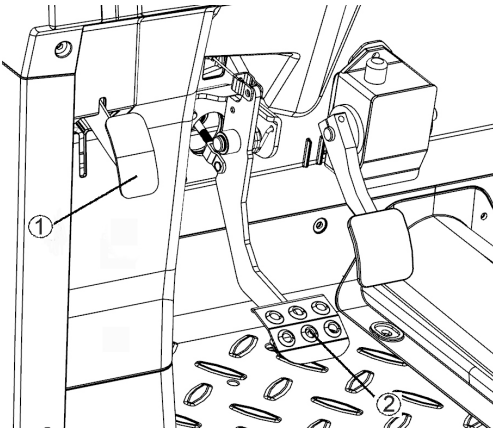
① Distance & Hour meter

Note: this meter also indicates accumulated mileages and electric drive system's failure codes. See page 32-40 for corresponding error code descriptions.

FEATURES AND CONTROLS

Setting the Parking Brake

1. To set the Parking Brake fully depress pedal (1).
2. To release Parking Brake, fully depress primary brake pedal (2).

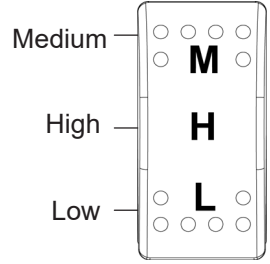


- ① Parking Brake Pedal
- ② Primary (Main) Brake Pedal

FEATURES AND CONTROLS

Drive Mode Switch

CAUTION! Changing the drive mode switch position while driving could result in an automatic increase or decrease in speed without a change to accelerator pedal pressure.



Press the top of the switch to select Max mode. Use this mode to operate the vehicle a greater distance or for a longer time period. This mode limits both speed and torque to obtain the maximum driving range.

Press the bottom of the switch to select low mode. Low mode is recommended for short-term operation in extreme load

conditions. Use low mode when towing, hauling loads or maneuvering over obstacles. Speed will be limited to a maximum of 10 MPH (16 km/h) and regenerative braking increases to improve control in aggressive terrain.

Move the switch to the center position to select the high range mode. Use this mode for most trail riding conditions. The maximum programmed speed in high range is 25mph (40 km/h).

| Mode | Maximum Speed | Torque (percent of maximum torque) | Deceleration (regenerative braking) | Application |
|-----------|------------------|------------------------------------|-------------------------------------|---|
| High | 25 MPH (40 km/h) | 70% | Minimum | Trail riding |
| Max Range | 15 MPH (24 km/h) | 50% | Minimum | Maximum drive time. |
| o | 10 MPH (16 km/h) | 100% | Maximum | own , au n oa s, r v n on see hills or aggressive terrain |

FEATURES AND CONTROLS

Direction Switch

When the direction selector is in the center position, the vehicle is in Neutral. The vehicle will not move if the accelerator pedal is depressed.

Push the top of the switch to choose forward operation. Push the bottom of the switch to choose reverse operation.

If the switch is changed while the accelerator pedal is depressed, the vehicle will not move in the new direction until the pedal is released, then depressed again.

Tip: The malfunction light will illuminate after changing drive direction if you fail to release the throttle pedal. When you release the accelerator the fault will disappear from the instrument panel

Headlight Switch

Turn on the key switch and toggle the head light switch to the “ON” position.

Toggle the head light switch to the “OFF” position to turn off the head lights and parking lights.

NOTE:

Turning the head light switch to the “ON” position causes the following lamps to light simultaneously.

1. Headlights
2. Instrument Panel Lights
3. Front & Rear Parking Lights

FEATURES AND CONTROLS

Hazard Switch

Press the top half of the emergency light switch, the turn signal lights will begin flashing and display on the on the instrument panel. Press the bottom half of the emergency light switch to turn off the flashers.

Note: The emergency light switch will operate when the key switch is in the “ON” position. Be careful that keeping the switch “ON” and the flashers operational will drain the batteries.

Turn Signal Switch

To indicate a right turn, push on the lower half of the turn toggle switch.

To indicate a left turn, push on the upper half of the turn toggle switch.

When the left or right signal is activated, the parking light will flash and the other will stay on.

The indicator lamp at the instrument panel also flashes indicating the direction of the turn.

Note: The emergency light switch will operate when the key switch is in the “ON” position. Be careful that keeping the switch “ON” and the flashers operational will drain the batteries.

FAULT CODE

| Fault Code | Message | Description | Recommended Action |
|-------------------|--------------------------------------|--|--|
| 4481 | Parking Brake Fault | Release Parking Brake | Release handbrake / Check microswitch |
| 4546 | No Motor Speed Signal | No speed feedback from motor | Check encoder wiring and speed measurement signal |
| 4547 | Tow Mode | Tow mode has been activated | Disable tow mode if not required |
| 454A | Bridge Enable Delayed | Unable to complete power on checks to allow the bridge to enable | Check motor connected or wait for motor to slow down |
| 4581 | Throttle Fault | Warning level throttle fault. Used for Renault Twizy | Check throttle wiring and installation. |
| 4584 | Contactor Output Over Current (warn) | Contactor driver over current | Ensure contactor doesn't exceed maximum current and check contactor wiring |
| 45C3 | Low Battery Cut Off | Battery voltage is less than Under Voltage limit | Charge battery |
| 45C4 | High Battery Cut Off | Battery voltage is greater than Over Voltage limit | Charge battery |
| 45C5 | High Capacitor Cut Off | Capacitor voltage is greater than Over Voltage limit | Charge battery |
| 45C9 | Motor in low voltage cutback | Motor control (DC link) has entered low voltage cutback region. | Charge battery |
| 45CA | Motor in high voltage cutback | Motor control (DC link) has entered high voltage cutback region. | Charge battery |
| 45CB | Mains Under Voltage | Mains Under Voltage | Check Mains Supply |
| 45CC | Mains Over Voltage | Mains Over Voltage | Check Mains Supply |
| 4602 | Device too hot | High heatsink temperature (5100,4) has reduced power to motor | Allow controller to cool down to normal operating temperature. |
| 4603 | Motor in thermal cutback | High motor temperature has reduced power to motor | Allow motor to cool down to normal operating temperature. |
| 4604 | Motor too cold | Low Measured temperature has reached -30deg | Check motor thermistor connection or allow motor to warm up. |

FAULT CODE

| Fault Code | Message | Description | Recommended Action |
|------------|--------------------------|--|--|
| 4681 | Unit in preoperational | Controller is in pre-operational state | If configured and ready for use, change state to operational. |
| 4682 | IO can't init | Controller has not received all configured RPDOs at power up | Check PDOs on all CANbus nodes are configured correctly and match up. |
| 4881 | Seat Fault | Valid direction selected with operator not seated or operator is not seated | Must be seated with driver seat belt latched |
| 4882 | Two Direction Fault | Both the forward and reverse switches have been active simultaneously | Check vehicle wiring and reset switches |
| 4883 | Sequence Fault | Any drive switch active at power up. | Deselect all drive switches |
| 4981 | Throttle Fault | Throttle value is greater than 20% at power up. | Release throttle |
| 4983 | Direction Change | Direction is changed and vehicle speed is greater than allowed | Neutral switch should be selected to clear the fault |
| 4A01 | Cutback | Thermal or voltage cutback factors have reduced below user defined levels. | Check for temperature or voltage cutback condition and take appropriate action |
| 4A81 | Motor stalled | No speed feedback from motor | Check encoder wiring and speed measurement signal |
| 4DC3 | Power Supply Critical | Battery voltage has dropped below critical level | Check controller voltage supply |
| 4F56 | Motor in wrong direction | Motor rotation detected as wrong direction. No longer supported | Check motor wiring. |
| 4D43 | Motor stalled | Motor rotation stalled. No longer supported | Check motor wiring. |
| 5201 | Heatsink overtemp | Controller heat sink has reached critical high temperature, and has shut down. | Allow controller to cool down to normal operating temperature. |
| 52C1 | Encoder Fault | Encoder input wire-off is detected. | Check encoder wiring |
| 52C2 | Motor Overcurrent Fault | Motor current exceeded controller rated maximum | Check motor configuration and wiring |
| 52C3 | Current Control Fault | Motor controller unable to maintain control of motor currents | Check motor configuration. Ensure motor speed is not too high. |
| 52C4 | Motor Overspeed Fault | Motor control tripped due to motor overspeed | Check motor configuration. Ensure motor speed is not too high. |
| 5301 | CANBUS Fault | CANbus fault condition detected on multinode system. | Check CANbus wiring |

FEATURES AND CONTROLS

Batteries

This vehicle is equipped with batteries that supply the power needed to operate the vehicle

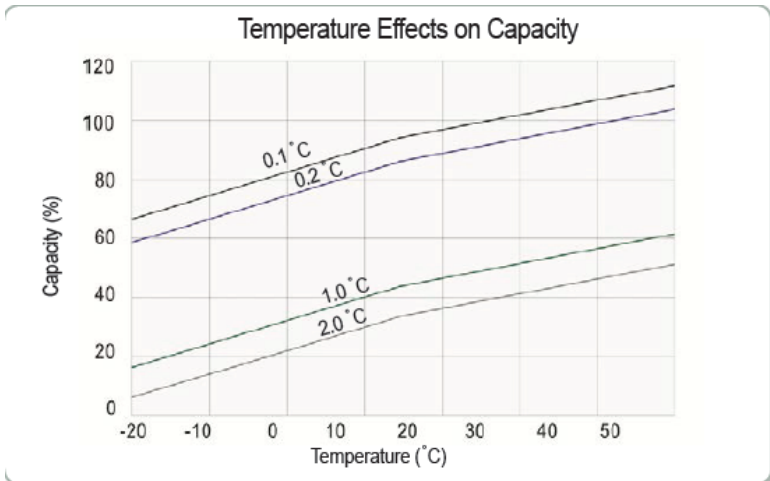
The batteries are located under the seat. See page 69 for battery access instructions.

Always observe all battery safety warnings and safe handling procedures as outlined on vehicle safety labels and in this manual. Refer to the battery maintenance section beginning on page 68.

Battery Handling Precautions

- Always make sure that all electrical accessories are grounded directly to the negative (-) post on the terminal board. Never use the chassis or body as a ground connection.
- Always keep battery terminals and connections clean and free of corrosion at all times. See page 69.
- Always maintain a full charge on the batteries. For best battery life, avoid discharging the batteries more than 80% on a consistent basis.
- Make sure new batteries are fully charged before using.
- Recharge batteries fully at the end of each day the vehicle is operated, allowing adequate time for the charger to complete its charge cycle. The batteries in this vehicle do not have a "memory effect". Frequent charging will extend their life and highly recommended.
- Avoid charging at temperatures above 120° F. (49° C.) ambient air temperature.
- **ALWAYS RECHARGE IN A WELL VENTILATED AREA.**
- Never connect accessories directly to the batteries. Always connect any powered accessory to a 12-volt auxiliary outlet or terminal board.
- Never connect jumper cables to any of the batteries of this vehicle.
- Use only insulated tools when working in the battery compartment.

Ambient Temperature & Affect on Run-Time



1. Run Time decreases as ambient temperature decreases. This can affect the range by up to 40% (which could result in 16 miles in decreased overall run time).

**** ALWAYS KEEP BATTERIES FULLY CHARGED OR CHARGER PLUGGED IN AT ALL TIMES IN COLD WEATHER.**

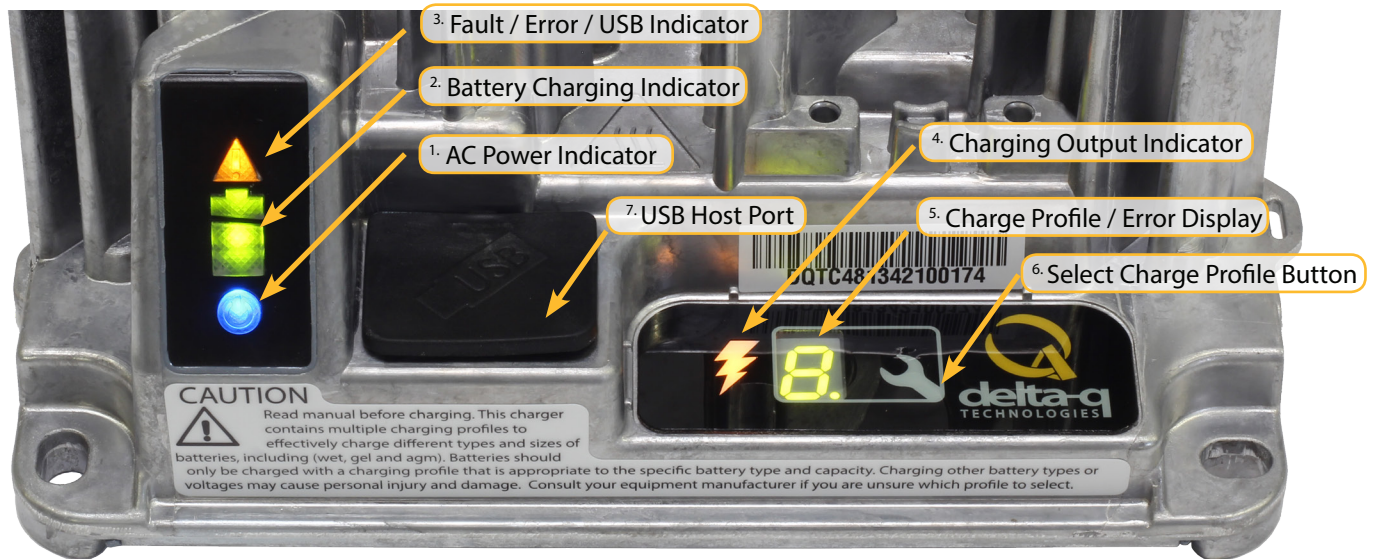
Safe Charger Operating Instructions

- ✦ The charger contains up to 25 selectable charging profiles stored in its internal memory to charge batteries. These profiles are specific to each manufacturer and model of battery. Your equipment supplier or charger distributor is responsible for ensuring the active charge profile matches the battery pack charging requirements. Contact them with any questions about which profile to select for each battery pack.
- ✦ The charger may become hot during charging. Use hand protection to safely handle the charger during charging.
- ✦ To maintain safe operations, the unit automatically reduces its output power if the temperature rises above set thresholds, or if the AC input voltage is too low. The charger will also reduce output power if it detects that the battery pack is damaged.
- ✦ If power is interrupted, and then returns, the charger will start and continue to operate without hazard to the user, or damage to the batteries.
- ✦ Unplug the charger from both AC and DC sources when cleaning, moving or conducting any maintenance or repair on the charger. No user serviceable parts inside. Do not remove the cover due to the risk of electrical shock.
- ✦ Do not expose charger to oil, dirt, mud or direct heavy water spray when cleaning the vehicle or machine.
- ✦ If the detachable AC input power cord set or DC output cord is damaged, do not use the charger until they are replaced with cord sets appropriate to your region and application.
- ✦ When mated with a Delta-Q sealed AC cord, the charger meets IP66 specifications, making it dust-tight and protected against powerful water jets. If a cord set with an unsealed connector is used, the plug and connector must be periodically inspected to ensure the contacts are clean and dry.
 - ✦ If this charger is provided with an AC cord set and the power plug does not match the power outlet, contact the equipment manufacturer, distributor or Delta-Q Technologies for the correct AC cord set terminating with a 3-prong plug suitable for your regions' grounded power outlet.
 - ✦ In North America (and other 120V AC regions), the AC cord must be a 3 conductor UL Listed/CSA approved detachable cord set at least 1.8m in length (≥ 6 feet), minimum 16AWG and rated SJT; terminated with 250V, 13A or greater connector.
 - ✦ In Japan, the AC cord must be a 3 conductor PSE approved detachable AC cord set terminated with 100V, 15A or greater connector.
 - ✦ In 220-240VAC regions the AC cord must be a 3-conductor safety-approved cord set, with 1.5mm² conductors(min.), rated appropriately for industrial use. The cord must be terminated on one end with a grounding type input plug appropriate for use in the country of destination and both plug and connector should be rated 250V, 10A or greater.
- ✦ Extension cords must be 3-wire cord no longer than 30m (100') at 10 AWG or 7.5m (25') at 16 AWG, per UL guidelines.



Only use compatible IEC320 C13 cables, as shown above

Getting to Know Your Delta-Q IC Series Battery Charger



1. When you first plug your charger into AC power, the AC Power Indicator will light solid blue to indicate AC power is present.



Solid blue = AC power available

2. The Battery Charging Indicator has 4 states as indicated here.



Flashing green = Low state of charge

Solid green = High state of charge



Flashing green = High state of charge

Solid green = Charge completed

3. The Fault / Error / USB Indicator will indicate faults, errors, and USB activity as indicated below. See the Error Display for the code and find the error description in the Charger Error and Fault Codes Table.



Solid red = Charger fault

See display panel for details



Flashing amber = External error condition - caution

See display panel for details



Flashing green = USB port active

Solid green = Safe to remove USB flash drive

4. The Charging Output Indicator means that the charger output is active, and there is a potential risk of electric shock.
5. The Charge Profile / Error Display shows one of four possible codes to indicate different conditions:
 - ✦ 'F' codes; a condition has caused charging to stop. Re-insert AC power to reset the charger to clear the error.
 - ✦ 'E' code; an error condition has caused charging to stop. Re-insert AC power to reset the charger to clear the error.
 - ✦ 'P' code; the charger profile selection is active.
 - ✦ 'USB' code; the USB interface is active, and the USB flash drive should not be removed.

When the 'E', 'F' and 'P' codes appear, the letter is followed by three numbers and a period to indicate different conditions (e.g. E-0-0-4). See the "Charger Fault Codes" or "Charger Error Codes" sections for details on these conditions and its solution.

6. The Select Charge Profile Button is used to select a charge profile from the profiles that are stored on the charger. Up to 25 charge profiles can be stored. See the "Selecting A Charge Profile" section for instructions.
7. The USB Host Port allows data to be transferred to and from the charger using a standard USB flash drive, including the downloading of charge tracking data and updating of the charger's software and / or charge profiles.

Charging Profiles

The IC Series charger contains up to 25 selectable charging profiles stored in its internal memory to charge batteries. These profiles are specific to each manufacturer and model of battery. Your equipment supplier or charger distributor is responsible for ensuring the active charge profile matches the battery pack charging requirements. Contact them with any questions about the default profile, the other profiles on the charger, and which profile to select for each battery pack.

Selecting A Charge Profile



1. Disconnect AC input from the charger, or from the wall outlet. Wait 30 seconds for the input relay to open.



2. While reconnecting AC input, press and hold the Select Charge Profile Button. Hold the button (approximately 10 seconds) through the light check function until Error Indicator is on (in amber) and Battery Charging Indicator (in green) starts flashing.



3. Press and release the Select Charge Profile Button to advance through the charge profiles. The selected charging profile will be displayed up to three times (e.g. "P-0-1-1" for Profile 11).*

* Process will time out and profile will remain unchanged if there is 15 seconds of inactivity, a profile number is allowed to display three times, or if AC power is cycled.

4. Once the desired charging profile is displayed, press and hold the Select Charge Profile button for 10 seconds to confirm selection and exit from Profile Selection Mode. When the charge profile is confirmed, the Error Indicator and Battery Charging Indicator lights will turn off, while the blue AC Power Indicator stays lit. At this point, the button can be released.
5. Press the Select Charge Profile Button to check that the desired profile has been selected.

In some circumstances, the charging profile output will be altered, to maintain safe operations. The unit automatically reduces its output power if the temperature rises above set thresholds, or if the AC input voltage is too low. The charger will also reduce output power if it detects that the battery pack is damaged. If power is interrupted, and then returns, the charger will start and continue to operate without hazard to the user, or damage to the batteries.

Identifying Charger Serial Number

The charger's serial number is printed on the front of the charger. This is the number to provide when requesting technical support.



Charger Error & Fault Codes Table

| Code | Description | Solution |
|---|--|---|
| E-0-0-1 E-0-2-1 | Battery high voltage | Possible causes: wrong battery voltage for charger, other charger also attached, resistive battery. Possible solutions: check the battery voltage and cable connections. Check battery size and condition. This error will automatically clear once the voltage is in range. |
| E-0-0-2 E-0-2-2 | Battery low voltage | Possible causes: battery disconnected, battery overdischarged. Possible solutions: check the battery voltage and cable connections. Check battery size and condition. This error will automatically clear once the voltage is in range. |
| E-0-0-3 | Charge timeout caused by battery pack not reaching required voltage within safe time limit. (charge profile dependent) | Possible causes: charger output reduced due to high temperatures, poor battery health, very deeply discharged battery and /or poorly connected battery. Possible solutions: operate at lower ambient temperature. Replace battery pack. Check DC connections. This error will clear once the charger is reset by cycling DC or AC. |
| E-0-0-4 | Battery could not meet minimum voltage (charge profile dependent) | Possible causes: check for shorted or damaged cells. Possible solutions: replace battery pack. Check DC connections. This error will automatically clear once the charger is reset by cycling DC or AC. |
| E-0-0-7 | Battery amp hour limit exceeded | Possible causes: poor battery health, very deeply discharged battery, poorly connected battery, and / or high parasitic loads on battery while charging. Possible solutions: replace battery pack. Check DC connections. Disconnect parasitic loads. This error will automatically clear once the charger is reset by cycling DC or AC. |
| E-0-0-8 | Battery temperature is out of range | Possible battery temperature sensor error. Check temperature sensor and connections. Reset charger. This error will clear once the condition has been corrected. |
| E-0-1-2 | Reverse polarity error | Battery is connected to the charger incorrectly. Check the battery connections. This error will clear once the condition has been corrected. |
| E-0-1-6 E-0-1-8 E-0-2-6 | USB operation failed (software) | Software upgrade failure or script operation failure. Ensure the USB flash drive is properly formatted and reinsert the USB flash drive. |
| E-0-1-7 | USB operation failed (hardware) | Remove and reinsert the USB drive. If condition persists, cycle AC and retry by reinserting the USB drive. |
| E-0-2-3 | High AC voltage error (>270VAC) | Connect charger to an AC source that provides stable AC between 85 - 270 VAC / 45-65 Hz. This error will clear once the condition has been corrected. |
| E-0-2-4 | Charger failed to initialize | The charger has failed to turn on properly. Disconnect AC input and battery for 30 seconds before retrying. |
| E-0-2-5 | Low AC voltage oscillation error | AC source is unstable. Could be caused by undersized generator and /or severely undersized input cables. Connect charger to an AC source that provides stable AC between 85 - 270 VAC / 45-65 Hz. This error will clear once the condition has been corrected. |
| F-0-0-1, F-0-0-2 F-0-0-3, F-0-0-4 F-0-0-6 | | Internal charger fault. Remove AC and battery for minimum 30 seconds and retry charger. If it fails again, please contact the manufacturer of your vehicle or machine. |

This is a Class A product complying with United States Federal Communications Commission, Code of Federal Regulations; 47CFR part 15. In a domestic environment, this product may cause radio interference, in which case the user may be required to take adequate measures.

FEATURES AND CONTROLS

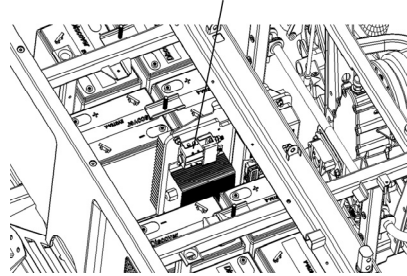
Main Power Connector

Damage to electrical connections and components will occur if they are unplugged before the main power connector is disconnected. Always disconnect the main power connector before servicing or unplugging any electrical components.

When disconnected, the main power connector disconnects the battery pack from all electrical components, with the exception of the contactor. After servicing the vehicle, the main power connector should be the last connection to be made.

The main power connector is located under the seat on the driver's side of the controller tray, adjacent to the main line contactor. To disconnect, unplug the connector.

To disconnect the battery pack from the vehicle completely, disconnect the main power connector, then remove the B+ wire from the battery terminal.



WARNING! Insulate any tools used within the battery area to prevent sparks or battery explosion caused by shorting the battery terminals or wiring. Remove the batteries, or cover the exposed terminals with an insulating material.

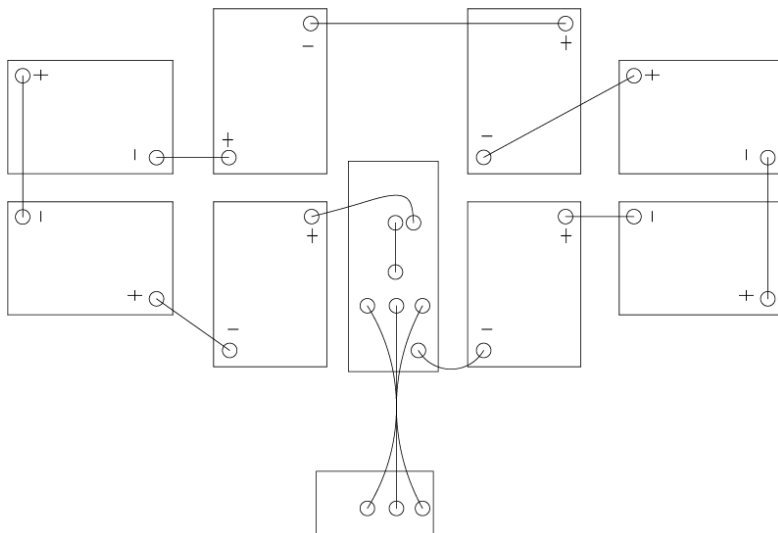
Trailer Hitch Bracket

This vehicle is equipped with a receiver hitch bracket for a trailer hitch. Trailer towing equipment is not supplied with this vehicle.

To avoid injury and property damage, always heed the warnings and towing capacities outlined in this manual.

Battery Orientation and Series Connection

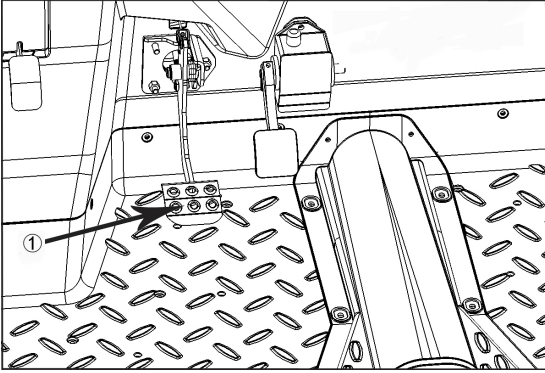
Front of Vehicle



FEATURES AND CONTROLS

Checking the brake pedal.

■ Brake Pedal



① Brake pedal

Brake Pedal

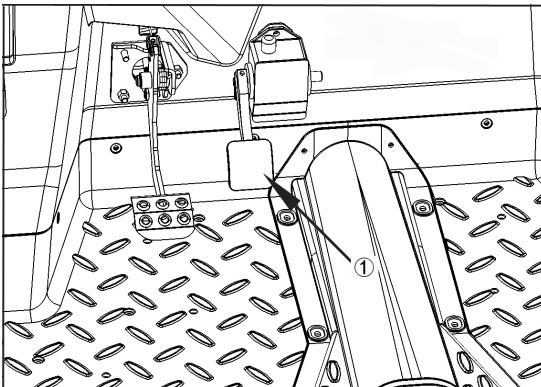


CAUTION:

To avoid personal injury:

- If the operator suddenly brakes, an accident may occur due to loss of control or the shifting forward of heavy loads.
- When driving on icy, wet or loose surface, make sure the vehicle is correctly loaded to prevent loss of control.

Accelerator Pedal



① Accelerator pedal

FEATURES AND CONTROLS

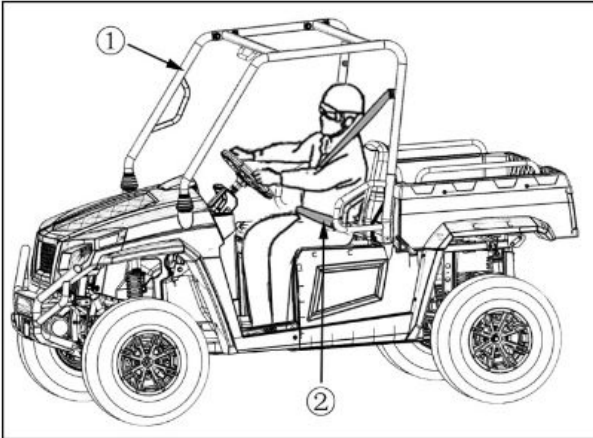
The accelerator pedal will function only when the key is ON and the direction selector switch is set to either forward or reverse. To begin moving or to increase vehicle speed, gradually push the accelerator pedal toward the floor. Holding the accelerator pedal down continuously will accelerate the vehicle to the maximum speed.

To slow the vehicle, release the accelerator pedal.

Electric motor braking provides braking when the pedal is released. For additional speed control or to stop the vehicle, apply the service brakes.

Roll-over protective structure

Understand completely and learn to use the safety devices (roll-over protective structure, seat belts), and never change original safety devices. If safety devices are damaged, consult your local dealer for replacement. Always use seat belts.



① Roll-over protective structure

② Seat belts

FEATURES AND CONTROLS

Seat Belts

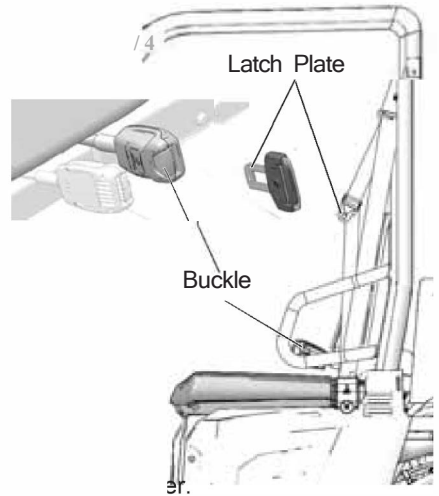
This HSUN vehicle is equipped with three- point lap and diagonal seat belts for the operator and passenger. Always make sure the seat belts are secured for all riders before operating.

The center of the seat is NOT equipped with a seat belt. Never allow a passenger to ride between the operator and passenger seats.

WARNING! Falling from a moving vehicle could result in serious injury or death. Always fasten your seat belt securely before operating or riding in the HS5D-EV.

To wear the seat belt properly, follow this procedure:

1. For 3-point belts, pull the seat belt latch downward and across your chest toward the buckle at the inner edge of the seat. The belt should fit snugly across your hips and diagonally across your chest. Make sure the belt is not twisted.
2. Push the latch plate into the buckle until it clicks.
3. Release the strap, it will self tighten.
4. To release the seat belt, press the square red button in the buckle's cent



**** THIS VEHICLE WILL NOT OPERATE WITHOUT THE DRIVERS SEAT BELT LATCHED.**

Seat Belt Inspection

Inspect all seat belts for proper operation before each use of the vehicle.

1. Push the latch plate into the buckle until it clicks. The latch plate must slide smoothly into the buckle. A click indicates that it's securely latched.
2. Push the red release latch in the middle of the buckle to make sure it releases freely.
3. Pull each seat belt completely out and inspect the full length for any damage, including cuts, wear, fraying or stiffness. If any damage is found, or if the seat belt does not operate properly, have the seat belt system checked and/or replaced by an authorized HSUN dealer.
4. To clean dirt or debris from the seat belts, sponge the straps with mild soap and water. Do not use bleach, dye or household detergents.

OPERATION

⚠ WARNING

Failure to operate the vehicle properly can result in a collision, loss of control, accident or rollover, which may result in serious injury or death. Read and understand all safety warnings outlined in the safety section of this owner's manual.

Pre-Ride Inspection

Failure to inspect and verify that the vehicle is in safe operating condition before operating increases the risk of an accident. Always inspect the vehicle before each use to make sure it's in safe operating condition.

| Item | Remarks | Page |
|------------------------------|---|-------------|
| Brake system/pedal travel | Ensure proper operation | 44 |
| Brake fluid | Ensure proper level | 63 |
| Steering | Ensure free operation | 68 |
| Tires | Inspect condition and pressure | 67 |
| Tires | Checking tire inflation pressure | 67 |
| Indicator lights/switches | Ensure operation | 30 |
| Seat belts | Check length of belt for damage, check latches for proper operation | 46 |
| Latches (hood/tailgate/seat) | Ensure all latches are secure | - |
| Batteries | Ensure full charges, clean terminals | 12-14 41 |
| Battery cables | Inspect for proper cable routing and secure connections | 73 |

OPERATION

Driving Procedure

1. Disconnect the charging cable (if connected).
2. Wear a helmet, eye protection, gloves, long-sleeve shirt, long pants and over-the-ankle boots.
3. Sit in the driver's seat and fasten the seat belt.
4. Apply the brakes.
5. Turn the key to the ON position. Wait about a second for the contactor to close before continuing.
6. Move the direction selector to forward or reverse.
7. Move the drive mode switch to the desired setting.
8. Release the park brake.
9. Check your surroundings and determine your path of travel.
10. Keeping both hands on the steering wheel, release the brake pedal and gradually push the accelerator toward the floor to begin driving.
11. Drive slowly. Practice maneuvering and using the accelerator and brakes on level surfaces.
12. Do not carry a passenger until you have at least two hours of driving experience with this vehicle. Never carry more than one passenger in this vehicle. Never allow a passenger to ride in the cargo box.
13. To stop the vehicle, release the accelerator pedal completely and brake to a complete stop.
14. Set the park brake.
15. Turn the key off.



WARNING! A rolling vehicle can cause serious injury. Always set the park brake when leaving the vehicle unattended.

OPERATION

Driving On Slippery Surfaces

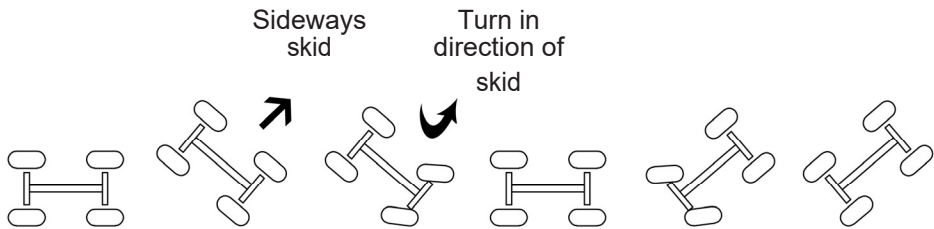
⚠ WARNING

Skidding or sliding can cause loss of control or rollover (if tires regain traction unexpectedly). When operating on slippery surfaces such as ice or loose gravel, reduce speed and use extra caution to reduce the chance of skidding or sliding out of control. Do not operate on excessively slippery surfaces.

Whenever riding on slippery surfaces such as wet trails or loose gravel, or during freezing weather, follow these precautions:

1. Do not operate on excessively rough, slippery or loose terrain.
2. Slow down before entering slippery areas.
3. Maintain a high level of alertness, reading the trail and avoiding quick, sharp turns, which can cause in loss of control.
4. Engage all-wheel drive before wheels begin to lose traction.
5. Correct a skid by turning the steering wheel in the direction of the skid. Never apply the brakes during a skid.

NOTICE: Severe damage to the drive train may occur if the 4WD is engaged while the wheels are spinning. Always allow the wheels to stop spinning before engaging 4WD.

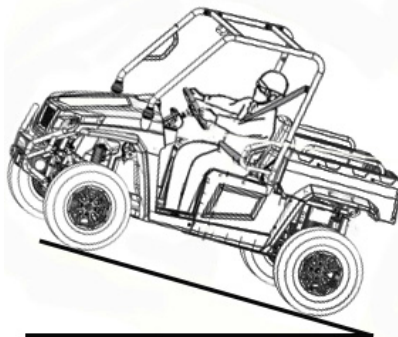


OPERATION

Driving Uphill

Whenever traveling uphill, follow these precautions:

1. Always travel straight uphill.
2. Avoid excessively steep hills.
3. Keep both feet on the floor.
4. Always check the terrain carefully before ascending any hill. Never climb hills with excessively slippery or loose surfaces.
5. Proceed at a steady rate of speed.
6. Never go over the crest of a hill at high speed. An obstacle, a sharp drop, or another vehicle or person could be on the other side of the hill.
7. If the vehicle stalls while climbing a hill, apply the brakes. Turn the key off and on, then change the drive mode to low mode. Place the direction selector switch in reverse and slowly allow the vehicle to roll straight downhill while applying light brake pressure to control speed.



Driving on a Sidehill (Sidehilling)

Driving on a sidehill is not recommended. Improper procedure could cause loss of control or rollover. Avoid crossing the side of any hill unless absolutely necessary.

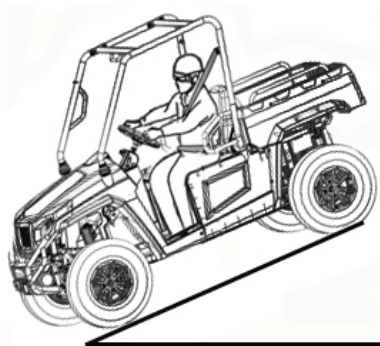
If crossing a sidehill is *unavoidable*, follow these precautions:

1. Slow down.
2. Exercise extreme caution.
3. Avoid crossing the side of a steep hill.

Driving Downhill

When driving downhill, follow these precautions:

1. Avoid excessively steep hills.
2. Always descend a hill with the direction selector switch on forward. Never descend a hill with the switch on neutral.
3. Drive straight downhill. Avoid descending a hill at an angle, which would cause the vehicle to lean sharply to one side. Travel straight downhill when possible.
4. Slow down.
5. Apply the brakes *slightly* to aid in slowing.



OPERATION

Driving Through Water

Your HSUN vehicle can operate through water up to a maximum recommended depth equal to the floorboards.

NOTICE: Serious damage can occur to the electrical system and batteries if the vehicle is operated in water deeper than the floorboards.

Follow these procedures when operating through water:

1. Determine water depths and current before entering water.
2. Choose a crossing where both banks have gradual inclines.
3. Proceed slowly, avoiding rocks and obstacles.
4. Avoid operating through deep or fast-flowing water.
5. After leaving water, always dry the brakes by applying light pressure to the pedal repeatedly until braking action is normal.



Driving Over Obstacles

Follow these precautions when operating over obstacles:

1. Always check for obstacles before operating in a new area.
2. Look ahead and learn to read the terrain. Be constantly alert for hazards such as logs, rocks and low hanging branches.
3. Travel slowly and use extra caution when operating on unfamiliar terrain. Not all obstacles are immediately visible.
4. Move the drive mode switch to low mode if needed. See page 42.
5. Avoid operating over large obstacles such as large rocks and fallen trees. If unavoidable, use extreme caution and operate slowly.
6. Always have all passengers dismount and move away from the vehicle before operating over an obstacle that could cause a rollover.



OPERATION

Driving in Reverse

Follow these precautions when operating in reverse:

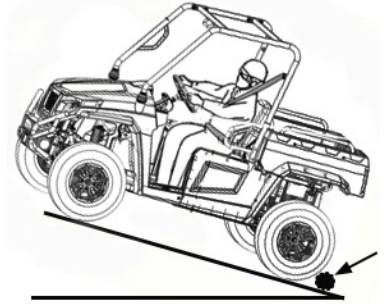
1. Always check for obstacles or people behind the vehicle. Always inspect left and right fields of vision before backing.
2. Always avoid backing downhill.
3. Back slowly.
4. Apply the brakes *lightly* for stopping.
5. Avoid turning at sharp angles.
6. Never accelerate suddenly.



Parking on an Incline

Avoid parking on an incline if possible. If it's unavoidable, follow these precautions:

1. Apply the brakes.
2. Set the park brake.
3. Turn the key off.
4. Block the rear wheels on the downhill side.



Parking the EV

1. When parking inside a garage or other structure, be sure that the structure is well ventilated and that the vehicle is not close to any source of flame or sparks, including any appliance with pilot lights.
2. Set the park brake.
3. Turn the key off. Remove the key to prevent unauthorized use.

OPERATION

Hauling Cargo

⚠ WARNING

Hauling cargo improperly can alter vehicle handling and may cause loss of control or brake instability, which can result in serious injury or death. Always follow these precautions when hauling cargo: Never exceed the maximum weight capacity of the vehicle. When determining the weight you are adding to the vehicle, include the weight of the operator, passenger, accessories, loads in the rack or box and the load on the trailer tongue. The combined weight of these items must not exceed the maximum weight capacity.

REDUCE SPEED AND ALLOW GREATER DISTANCES FOR BRAKING WHEN HAULING CARGO.

Always load the cargo box with the load as far forward and as low as possible.

When operating over rough or hilly terrain, reduce speed and cargo to maintain stable driving conditions.

Always operate the vehicle with extreme care when hauling or towing loads.

Slow down and drive in the lowest gear available.

SECURE ALL LOADS BEFORE OPERATING.

Unsecured loads can create unstable operating conditions, which could result in loss of control of the vehicle.

OPERATE ONLY WITH STABLE AND SAFELY ARRANGED LOADS.

When handling off-centered loads that cannot be centered, securely fasten the load and operate with extra caution. Always attach the tow load to the hitch point designated for your vehicle.

HEAVY LOADS CAN CAUSE BRAKING AND CONTROL PROBLEMS.

Use extreme caution when applying brakes with a loaded vehicle. Avoid terrain or situations that may require backing downhill.

USE EXTREME CAUTION.

when operating with loads that extend over the rack sides. Stability and maneuverability may be adversely affected, causing a rollover.

DO NOT TRAVEL FASTER THAN THE RECOMMENDED SPEEDS.

Vehicle should never exceed 10 MPH (16 km/h) while towing a load on a level grass surface. Vehicle speed should never exceed 5 MPH (8 km/h) when towing loads in rough terrain, while cornering, or while ascending or descending a hill.

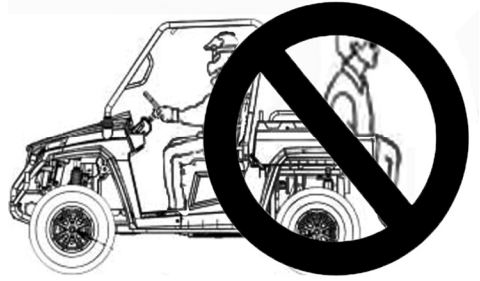
The HS5D-EV has been designed to carry or tow specific capacities. Always read and understand the load distribution warnings listed on the warning labels. Move the drive mode switch to low mode if needed. See page 24.

The total load (operator, passenger, accessories, cargo and weight on hitch) must not exceed the maximum weight capacity of the vehicle. Never exceed the following capacities.

| Maximum Capacities (Level Ground) | Cargo Box |
|--------------------------------------|----------------|
| 855lbs.(389kg) | 500lbs.(227kg) |

OPERATION

WARNING! Driving with passengers in the cargo box can result in severe injury or death. Never allow passengers to ride in the cargo box. A passengers must always ride in the cab with seat belt fastened securely.



OPERATION

Towing Loads

Towing improperly can alter vehicle handling and may cause loss of control or brake instability. Always follow these precautions when towing:

1. Never load more than 150 lbs. (68.1 kg) tongue weight on the towing bracket.
2. Do not operate the vehicle faster than 10 MPH (16 km/h) when towing. Towing a trailer increases braking distance.
3. Do not tow more than the recommended weight for the vehicle. See the towing capacity chart below and the specifications charts beginning on page 75.
4. Attach a trailer to the trailer hitch bracket only. Do not attach a trailer to any other location or you may lose control of the vehicle.
5. Never tow a trailer on a grade steeper than 15°.

| Total Towed Load Weight (Level Ground) | Total Towed Load Weight (15° grade) | Total Hitch Vertical Weight | Maximum Towing Speed |
|--|-------------------------------------|-----------------------------|----------------------|
| 1500lbs.(680kg) | 500lbs.(227kg) | 150 lbs.(68.1 kg) | 10 MPH(16 kph) |

Towing the EV

NOTICE: When towing the vehicle, the key **MUST** be in the OFF position or severe motor damage will occur.

Follow these procedures when towing the vehicle:

1. Turn the key off.
2. Always follow these precautions when towing this vehicle:
 - Do not operate faster than 10 MPH (16 km/h).
 - Do not tow on public streets.
 - Do not allow passengers in the towed vehicle.
 - Avoid abrupt starts and stops.
 - Avoid sharp turns and abrupt steering maneuvers.
 - Avoid towing on a hill.

OPERATION

HOW TO RAISE THE CARGO BED

⚠ CAUTION

To avoid personal injury:

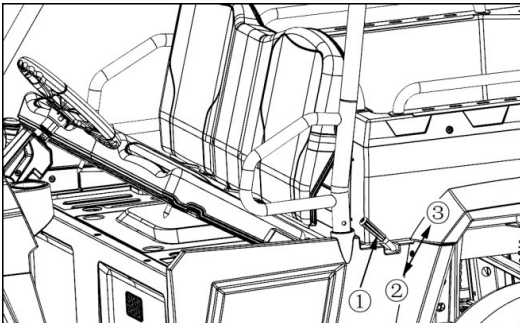
- When servicing under raised bed, make sure safety support is properly mounted.
- Do not touch muffler or exhaust pipes while they are hot; Otherwise, severe burns could result.
- Raising and Lowering the Cargo Bed
- ◆ To raise the cargo bed
 - 1、 Apply the parking brake with the engine off.
 - 2、 Pull up the cargo bed handle.

◆ **To lower the cargo bed**

Press down the cargo bed hard to make the gas spring contractive till it is locked

NOTE:

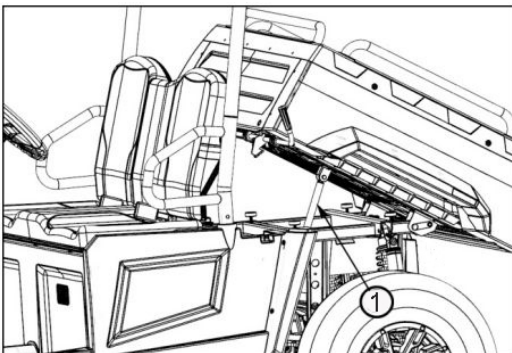
Pull up the cargo bed handle to raise the cargo bed with the gas spring elasticity.



① RELEASE HANDLE

② UP

③ DOWN



① Gas spring

OPERATION

Transporting the EV

When transporting the EV for a long distance or on public streets, always use a trailer with an approved load rating greater than the EV curb vehicle weight of 1700 lbs. (830 kg) plus any installed accessories or cargo.

1. Remove the key to prevent loss.
2. Secure the seat, hood and tailgate latches. Ensure that the seats are attached correctly and are not loose.
3. Always tie the frame of the EV to the transporting unit securely with suitable straps.
4. If using an open trailer, remove the windshield (if equipped).
5. Never allow passengers on a trailer or in a trailered vehicle.
6. Reduce speed and drive with caution.

4. Always tie the frame of the EV to the transporting unit securely with suitable straps.
5. If using an open trailer, remove the windshield (if equipped).
6. Never allow passengers on a trailer or in a trailered vehicle.
7. Reduce speed and drive with caution.

WARNING! Cargo and other loose vehicle parts may fly off while transporting this vehicle. Secure or remove all cargo, and inspect the unit for loose parts prior to transport.

OPERATION

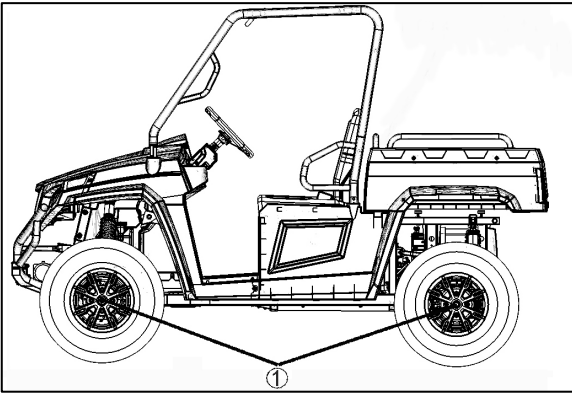
Checking wheel bolt torque

CAUTION

To avoid personal injury

- Never operate vehicle with a loose wheel bolts.
- Any time these bolts are loosened they should be retightened to the specified torque.
- Check all bolts frequently and keep them tight.

Check wheel bolts regularly especially when new if they are loose tighten them as follows:



① Torque Lug Nuts to 60 ft.lbs. (80 N.m)

MAINTENANCE

Periodic Maintenance Chart

Careful periodic maintenance will help keep your vehicle in the safest, most reliable condition. Inspection, adjustment and lubrication of important components are explained in the periodic maintenance chart.

Inspect, clean, lubricate, adjust and replace parts as necessary. When inspection reveals the need for replacement parts, use genuine HSUN parts available from your HSUN dealer.

Tip: Service and adjustments are important for proper vehicle operation. If you're not familiar with safe service and adjustment procedures, have a qualified dealer perform these operations. Vehicles subjected to heavy or severe use patterns must be inspected and serviced more frequently.

Severe Use Definition

- Frequent immersion in mud, water or sand
- Racing or race-style high RPM use
- Prolonged low speed, heavy load operation

MAINTENANCE

Periodic Maintenance Chart

Perform all services at whichever maintenance interval is reached first.

| ITEM | MAINTENANCE INTERVAL (WHICHEVER COMES FIRST) | | | REMARKS |
|---|--|-----------|-----------------|---|
| | Hours | Frequency | Miles (KM) | |
| Pre-Ride Inspection Check | | | | |
| Steering | - | Pre-Ride | - | No loose hardware |
| Front-suspension | - | Pre-Ride | - | No loose hardware |
| Rear-suspension | - | Pre-Ride | - | No loose hardware |
| Tires | - | Pre-Ride | - | Proper tire pressure |
| Brake fluid level | - | Pre-Ride | - | Inspect and add if needed |
| Brake pedal travel | - | Pre-Ride | - | See Owner's Manual |
| Brake systems | - | Pre-Ride | - | Make adjustments as needed. |
| Lug Nuts | - | Pre-Ride | - | Ensure lug nuts are torque to spec |
| Frame fasteners | - | Pre-Ride | - | All fasteners are secured |
| Engine Oil Level | - | Pre-Ride | - | Inspect and add if needed |
| Coolant | - | Pre-Ride | - | Inspect and add if needed |
| Head / Tail / Brake Lights | - | Pre-Ride | - | Check operation |
| Break-In Maintenance Check | | | | |
| Rear Gear Case | - | - | First 100 (150) | Replace break-in oil with proper oil type |
| Front Gear Case | - | - | First 100 (150) | Initial fluid level inspection; add lubricant if needed |
| Toe adjustment | - | - | First 100 (150) | Inspect periodically; adjust when parts are replaced |
| Battery Cables | - | - | First 100 (150) | Inspect; clean; tighten if needed |
| Routine Maintenance Check (performed at each interval below, whichever comes first) | | | | |
| Brake pad wear | 10 H | Monthly | 100 (160) | Inspect periodically |
| Battery | 20H | Monthly | 250 (402) | Check terminals; clean; test |
| General lubrication | 25H | 3 M | 250 (402) | Lubricate all fittings, pivots, cables, etc. |
| Steering | 50 H | 6 M | 500 (800) | Lubricate |
| Front / Rear Gearcase Fluid | 50H | 6 M | 500 (800) | Change Fluid |
| Front / Rear Stabilizer Bars | 50H | 6 M | 500 (800) | Lubricate and inspect bushings |
| Cables | 50 H | 6 M | 500 (800) | Inspect for free movement & lubricate |
| Drive Shafts | 100H | 12M | 1000 (1600) | Remove and grease |
| Wiring | 100 H | 12 M | 1000 (1600) | Inspect for wear & routing |
| Wheel Bearings | 100 H | 12 M | 1000 (1600) | Inspect; replace as needed |
| Shocks | 100 H | 12 M | 1000 (1600) | Check for oil leaks |
| Brake Fluid | 100 H | 12M | 1000 (1600) | Change every two years |
| Suspension Components | 100H | 12M | 1000 (1600) | Inspect; replace if necessary |
| Extreme Maintenance Check (cut the Routine Maintenance Schedule in half) | | | | |
| * Service Note: Under extreme use, change gear case fluid every 25 hours. "Extreme Use" is defined as constant <u>4WD</u> operation on hilly or mountainous terrain, or if 4WD is the primary mode of operation. | | | | |

MAINTENANCE

Lubrication

| Item | Lube | Method |
|--------------------------------|--------------------------------|--------------|
| Brake Fluid | DOT 4 Brake Fluid | See page 63. |
| Main Gear case Oil (Transaxle) | SAE80 API GL-4 Hypoid gear oil | See page 61. |
| Front Gear case Oil | SAE80 API GL-5 Hypoid gear oil | See page 62. |

Main Gearcase (Transaxle)

Always check and change the main gearcase oil at the intervals outlined in the Periodic Maintenance Chart beginning on page 59. Maintain the oil level even with the bottom thread of the fill plug hole.

Refer to the Gearcase Specifications Chart for recommended lubricants, capacities and torque

specifications.

Oil Check

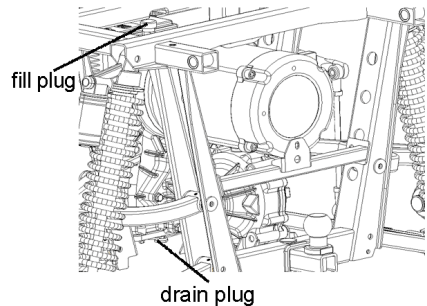
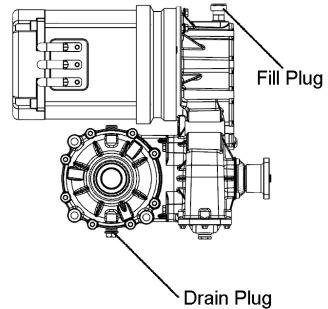
The fill plug is located at the right rear of the vehicle.

1. Position the vehicle on a level surface.
2. Remove the fill plug.
3. Check the oil level.
4. Add the recommended oil as needed.
5. Reinstall the fill plug. Torque to specification.

Oil Change

The drain plug is located on the lower right side of the main gearcase, near the fill plug. Refer to the Gearcase Specifications Chart for recommended lubricants, capacities and torque specifications.

1. Remove the fill plug.
2. Place a drain pan under the drain plug. Remove the drain plug. Allow the oil to drain completely.
3. Wipe the magnetic end of the drain plug clean to remove accumulated metallic filings.
4. Reinstall the drain plug. Torque to specification.
5. Add the recommended oil as needed. Do not overfill.
6. Reinstall the fill plug. Torque to specification.
7. Check for leaks. Dispose of used oil properly.



MAINTENANCE

Gear cases

Front Gear case

Always check and change the front gear case oil at the intervals outlined in the Periodic Maintenance Chart beginning on page 59. Maintain the oil level even with the bottom thread of the fill plug hole.

Refer to the Gearcase Specifications Chart on page 54 for recommended lubricants, capacities and torque specifications. See page 70 for the part numbers of HSUN products.

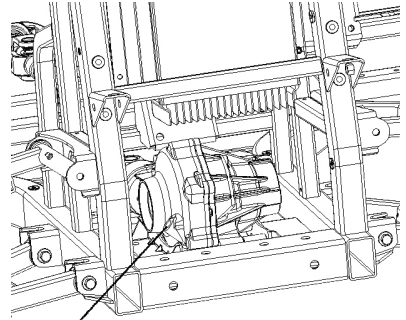
Oil Check

The front gear case fill plug is located on the left side of the front gear case.

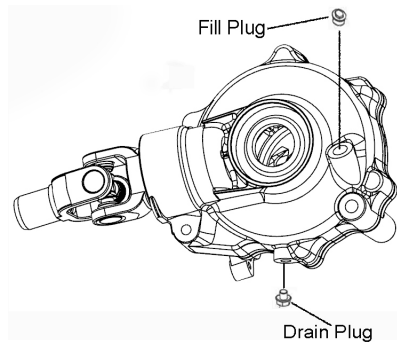
1. Position the vehicle on a level surface.
2. Remove the fill plug. Check the oil level.
3. Add the recommended oil as needed.
4. Rein stall the fill plug. Torque to specification.

Oil Change

1. Support the vehicle securely with a jack stand.
2. Remove the front tire on the driver's side.
3. Remove the fill plug.
4. Place a drain pan under the drain plug.
5. Remove the drain plug. Allow the oil to drain completely.
6. Clean the drain plug. Rein stall the drain plug. Torque to specification.
7. Add the recommended oil.
8. Rein stall the fill plug. Torque to specification.
9. Check for leaks.
10. Discard used oil properly.



Fill Plug



Drain Plug

MAINTENANCE

Brakes

The front and rear brakes are hydraulic disc type brakes. Press down on the brake pedal to engage the brakes. See page 44.

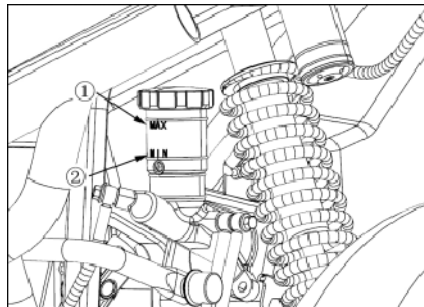
Brake Fluid

Inspect the brake system routinely. Inspect the level of the brake fluid before each operation.

WARNING! After opening a bottle of brake fluid, always discard any unused portion. Never store or use a partial bottle. Brake fluid is hygroscopic, meaning it rapidly absorbs moisture from the air. The moisture causes the boiling temperature of the brake fluid to drop, which can lead to early brake fade and the possibility of accident or severe injury.

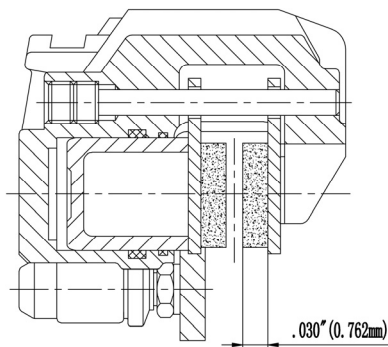
Change the brake fluid every two years and any time the fluid becomes contaminated, the fluid level is below the minimum, or if the type and brand of the fluid in the reservoir are unknown. See page 53 for fluid recommendations.

1. Position the vehicle on a level surface.
2. View the brake fluid level at the reservoir in the driver's side wheel well. The level should be between the upper (MAX) and lower (MIN) level lines.
3. If the fluid level is lower than the upper level line, add brake fluid to the upper (MAX) line.
4. Apply the brake forcefully for a few seconds and check for fluid leakage around the fittings.



Brake Inspection

1. Check the brake system for fluid leaks.
2. Check the brake pedal for excessive travel or a spongy feel.
3. Check the friction pads for wear, damage and looseness.
4. Check brake discs for signs of cracks, excessive corrosion, warping or other damage. Clean any grease using an approved brake cleaner or alcohol.
5. Inspect the brake disc spline and pad wear surface for excessive wear. Change pads when worn to .030" (0.762 mm).



① MAX

② MIN

MAINTENANCE

Steering Wheel Inspection

Check the steering wheel for specified free play and smooth operation at the intervals outlined in the Periodic Maintenance Chart beginning on page 59.

1. Position the vehicle on a level surface.
2. Lightly turn the steering wheel left and right. There should be 0.8"-1.0" (20-25 mm) of free play at the outer rim of the steering wheel.
3. If there is excessive free play or strange noises, or the steering feels rough or "catchy," have the steering system inspected by an authorized HSUN dealer.

Front and Rear Shock Adjustment

WARNING

These shock absorber assemblies contain highly pressurized nitrogen gas, read and understand the following information before handling the shock absorber assemblies.

- **Do not tamper with or attempt to open the cylinder assemblies.**
- **Do not subject the shock absorber assemblies to an open flame or other high heat source. This may cause the unit to explode due to excessive gas pressure.**
- **Do not deform or damage the cylinders in any way. Cylinder damage will result in poor damping performance.**
- **Do not dispose of a damaged or worn out shock absorber assembly yourself. Take the shock absorber assembly to a HSUN dealer for any service.**

The spring preload, rebound damping and compression damping forces of the front and rear shock absorber assemblies can be adjusted to suit the operating conditions.

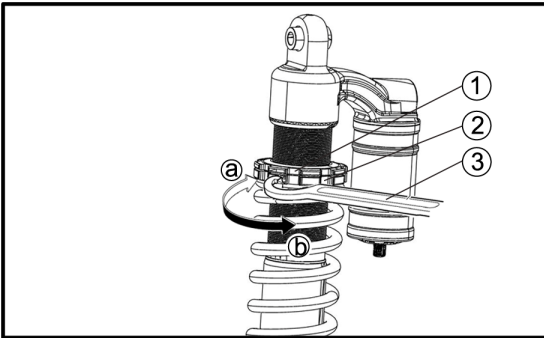
NOTE:

Never turn an adjusting mechanism beyond the minimum and maximum settings.

Spring preload

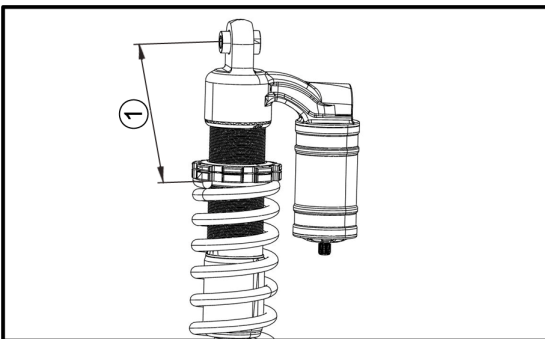
1. Loosen the locknut.
2. Turn the spring preload adjusting nut in direction **(a)** to increase the spring preload and thereby harden the suspension, and in direction **(b)** to decrease the spring preload and thereby soften the suspension.

MAINTENANCE



- ① Locknut
- ② Spring preload adjusting nut
- ③ Special wrench

- A special wrench can be obtained at a HSUN dealer to make this adjustment.
- The spring preload setting is determined by measuring distance A, shown in the illustration. The shorter distance A is, the lower the spring preload; the longer distance A is, the higher the spring preload. With each complete turn of the adjusting nut.



- ① Distance A

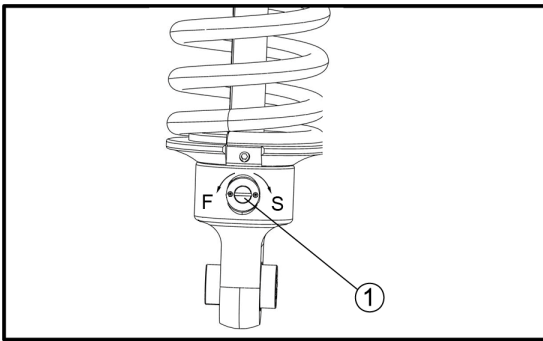
3. Tighten the locknut.

NOTE:

Always tighten the locknut against the adjusting nut, and then tighten it to the specified torque.

Rebound damping force

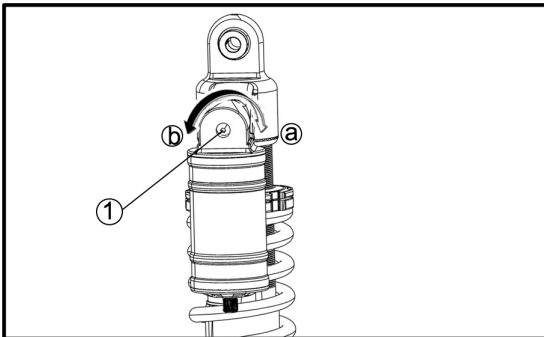
Turn the rebound damping force adjusting screw in direction **S** to increase the rebound damping force and thereby harden the damping, and in direction **F** to decrease the rebound damping force and thereby soften the damping.



① Rebound damping force adjusting screw

Compression damping force

Turn the compression damping force adjusting screw (use 3.0 allen wrench) in direction ① to increase the compression damping force and thereby harden the damping, and in direction ② to decrease the compression damping force and thereby soften the damping.



① Compression damping force adjusting screw

⚠ WARNING

- Suspension components become hot during operation. Never touch the compression damping force adjusting screw, the rebound damping force adjusting screw or the oil reservoir with your bare hand or skin until suspension components have cooled.
- Always adjust the shock absorber assemblies on the left and right side to the same setting. Uneven adjustment can cause poor handling and loss of stability, which could lead to an accident.

MAINTENANCE

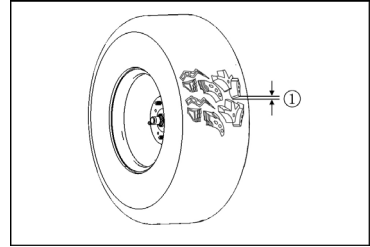
Tires

⚠ WARNING

Operating your vehicle with worn tires, improperly inflated tires, non-standard tires or improperly installed tires will affect vehicle handling and could cause an accident resulting in serious injury or death. Always follow all tire maintenance procedures as outlined in this manual and on the labels on the vehicle. Always use HSUN -approved size and type of tires for this vehicle when replacing tires.

Tire Tread Depth

Always replace the tires when the tread depth is worn to minimum allowable.



① 3mm(0.12in)

Checking tire inflation pressure

Though the tire pressure is factory-set to the prescribed level, it naturally drops slowly in the course of time, thus check it every day and inflate as necessary.

| tire sizes | inflation pressure |
|----------------|---|
| Front: 26x9-14 | 138kPa (1.4kgf/cm ² , 20psi) |
| Rear: 26x11-14 | 138kPa (1.4kgf/cm ² , 20psi) |

Inspect the following items occasionally for tightness, and if they've been loosened for maintenance service. Do not lubricate the stud or the lug nut.

Wheel Removal

1. Apply the brakes. Set the park brake. Turn the key off.
2. Loosen the wheel nuts slightly.
3. Elevate the side of the vehicle by placing a suitable stand under the frame.
4. Remove the wheel nuts and washers. Remove the wheel.

Wheel Installation

1. Set the park brake. Place the wheel in the correct position on the wheel hub. Be sure the valve stem is toward the outside and rotation arrows on the tire point toward forward rotation.

WARNING! Improperly installed wheels can adversely affect tire wear and vehicle handling, which can result in serious injury or death. Always ensure that all nuts are torqued to specification. Do not service axle nuts that have a cotter pin installed. See your HSUN dealer.

2. Attach the wheel nuts and washers and finger tighten.
3. Carefully lower the vehicle to the ground.
4. Torque the wheel nuts to specification. See page 58.

MAINTENANCE

Batteries

WARNING

Battery posts, terminals and related components contain lead and lead compounds, chemicals known to cause cancer and reproductive harm. Always wash your hands after touching or handling the batteries.

WARNING

Charging a damaged battery can result in serious injury. Never attempt to charge a frozen or bulging battery. Discard the battery appropriately and install a new battery.

WARNING

Improperly connecting or disconnecting battery cables can result in an explosion and cause serious injury or death.

WARNING

Battery electrolyte is poisonous. It contains sulfuric acid. Serious burns can result from contact with skin, eyes or clothing.

Antidote:

External: Flush with water.

Internal: Drink large quantities of water or milk. Follow with milk of magnesia, beaten egg, or vegetable oil. Call physician immediately.

Eyes: Flush with water for 15 minutes and get prompt medical attention.

Batteries produce explosive gases. Keep sparks, flame, cigarettes, etc. away. Ventilate when charging or using in an enclosed space. Always shield eyes when working near batteries. KEEP OUT OF REACH OF CHILDREN.

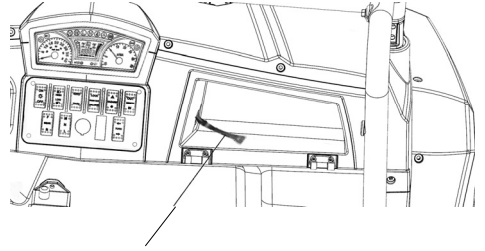
MAINTENANCE

Batteries

Battery Charging

When not in use, park the vehicle and connect the battery charger. The vehicle's charging cord is located inside the right Storage box .

WARNING! Failure to provide adequate ventilation while charging batteries can result in an explosion. Hydrogen gas is emitted during charging and will rise and accumulate at the ceiling. Always ensure a minimum of five (5) air changes per hour in the charging area. Never charge the batteries in an area subject to a flame or spark, including areas containing gas or propane water heaters and furnaces. Do not smoke in the charging area. Always follow these precautions when



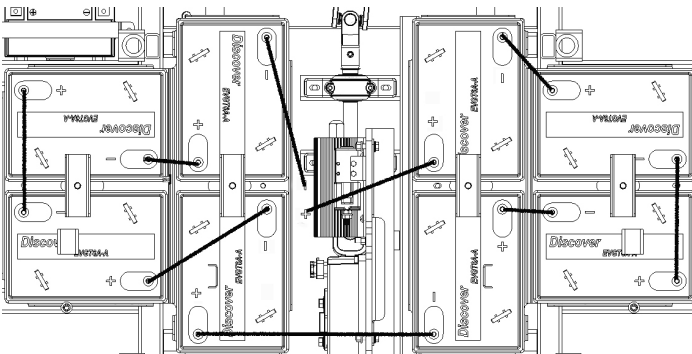
Charging Cord

charging the batteries:

1. Position the vehicle on a level surface.
2. Make sure the charging area is well ventilated.
3. Make sure the key is off.
4. Open the hood and any door enclosures or zippers.
5. Always use a extension cord with a minimum rating of 20 amps.
6. Inspect the charging cord and extension cord for cracks, loose connections and frayed wiring. Replace any damaged components promptly.
7. Always connect the vehicle charger to the extension cord first, then plug the cord into a wall receptacle.
8. Make sure the charger uses a dedicated circuit to prevent overloading. If charging multiple vehicles, each vehicle should use a dedicated circuit.

Tip: After the batteries have fully recharged, the battery charger will automatically cycle in and out of the trickle charge mode to maintain the charge.

9. When disconnecting the charger, always disconnect the extension cord from the wall receptacle first, then disconnect the cord from the vehicle's charging cord.



MAINTENANCE

Batteries

Battery Access

To access the batteries, remove the seat. See page 46. Remove the storage tray (if equipped).

NOTICE: Before removing the seat to access the batteries, make sure any wire or metal items (including seat belt latches) remain clear of the battery compartment to avoid causing a short circuit to the electrical system.

Battery Inspections

Inspect battery terminal connections monthly. Clean batteries as recommended. Using an insulated wrench, torque bolts to 8 ft. lbs. (11 Nm).

Battery Cleaning

Always keep battery terminals and connections free of corrosion. To clean, remove corrosion with a stiff wire brush. Wash with a solution of one tablespoon baking soda and one cup water. Rinse well with tap water and dry off with clean shop towels. Coat battery terminals with dielectric grease or petroleum jelly.

NOTICE: Do not allow cleaning solution or tap water to enter the batteries.

Battery Replacement

With proper care and maintenance as outlined in this owner's manual, battery life could be extended up to four years or longer, depending on the amount of use. When battery replacement is necessary, please see your authorized HSUN dealer.

WARNING! Handling batteries and electrical components improperly can result in serious injury or death. Do not attempt to remove batteries or battery cables. Always see your dealer for battery-related service.

MAINTENANCE

Cleaning and Storage

Washing the Vehicle

Keeping your HSUN vehicle clean will not only improve its appearance but it can also extend the life of various components.

NOTICE: High water pressure may damage components. HSUN recommends washing the vehicle by hand or with a garden hose, using mild soap.

NOTICE: Certain products, including insect repellents and chemicals, will damage plastic surfaces. Do not allow these types of products to contact the vehicle.

The best and safest way to clean your HSUN vehicle is with a garden hose and a pail of mild soap and water.

1. Use a professional-type washing cloth, cleaning the upper body first and the lower parts last.
2. Rinse with clean water frequently.
3. Dry surfaces with a chamois to prevent water spots.

Washing Tips

- Avoid the use of harsh cleaners, which can scratch the finish.
- Do not use a power washer to clean the vehicle.
- Do not use medium to heavy duty compounds on the finish.
- Always use clean cloths and pads for cleaning and polishing. Old or reused cloths and pads may contain dirt particles that will scratch the finish.
- Avoid directing water toward electrical components, including batteries, wiring and switches.

Washing the Vehicle

If a high pressure water system is used for cleaning (not recommended), exercise extreme caution. The water may damage components and could remove paint and labels. Avoid directing the water stream at the following items:

- Wheel bearings
- Main gear case seals
- Brakes
- Cab and body panels
- Labels and decals
- Switches and controls
- Electrical components and wiring

If an informational or graphic label becomes illegible or comes off, contact your HSUN dealer to purchase a replacement. Replacement *safety* labels are provided by HSUN at no charge.

Grease all zerk fittings immediately after washing.

MAINTENANCE

Cleaning and Storage

Polishing the Vehicle

HSUN recommends the use of common household aerosol furniture polish for polishing the finish on your HSUN vehicle. Follow the instructions on the container.

Polishing Tips

- Avoid the use of automotive products, some of which can scratch the finish of your vehicle.
- Always use clean cloths and pads for cleaning and polishing. Old or reused cloths and pads may contain dirt particles that will scratch the finish.

Chrome Wheel Care (if equipped)

Proper maintenance will protect chrome wheels from corrosion, preserve wheel life and ensure a “like new” appearance for many years. Chrome wheels exposed to road salt (or salt in the air in coastal areas) are more susceptible to corrosion if not properly cleaned. Clean chrome wheels more often if they’re exposed to salt or other corrosive elements.

1. Wash chrome wheels frequently. Use a mild detergent. Never use abrasive cleaners on plated or painted surfaces.
2. Rinse well with clear water. Soap, detergents, salt, dirt, mud and other elements can cause corrosion.
3. Polish the clean chrome wheels periodically. Use an automotive grade chrome polish.
4. Routinely and liberally apply a weather resistant wax to each polished chrome wheel. Choose a product suitable for chrome finishes. Read and follow the product labels and instructions.

MAINTENANCE

Cleaning and Storage

Storage Tips

Clean the Exterior

Make any necessary repairs and clean the vehicle as recommended. See page 71.

Inspect and Lubricate

Inspect all cables and lubricate all areas of the vehicle as recommended in the Periodic Maintenance Chart beginning on page 59.

Battery Maintenance

See pages 68-69 for procedures.

Fluid Levels

Inspect the fluid levels. Add or change fluids as recommended in the Periodic Maintenance Chart beginning on page 63.

- Front and rear gearcase fluid (if equipped)
- Main gearcase fluid
- Brake fluid (change every two years and any time the fluid looks dark or contaminated)

MAINTENANCE

Storing the Vehicle

Any time the vehicle will be parked for more than a few hours, follow the recommended storage procedures:

1. Make any necessary repairs and clean the vehicle.
2. Clean the batteries.
3. Store the vehicle out of the sun in a cool, dry place.
4. Be sure the storage area is well ventilated.
5. Turn the key off.
6. *Do not* set the park brake.
7. Verify that tire pressure is at specification.
8. Block the wheels to prevent rolling.
9. Fully charge the batteries. Leave the charger connected to maintain a full charge during the storage period, or check battery voltage each month during storage and recharge as needed to maintain a full charge. If the charger remains connected, check it monthly to verify proper operation.

Tip: Do not use plastic or coated materials. They do not allow enough ventilation to prevent condensation, and may promote corrosion and oxidation.

WARNING! Do not cover the vehicle while the charger is connected. Dangerous levels of hydrogen gas could accumulate.

Removal from Storage

1. Inspect all battery connections.
2. Verify that batteries are fully charged.
3. Verify that tire pressure is at specification.
4. Perform the pre-ride inspection.
5. Inspect and verify the tightness of the bolts, nuts and other fasteners.
6. Lubricate at the intervals outlined in the Periodic Maintenance Chart beginning on page 59.

SPECIFICATION TABLE

| | | | | |
|--|---------------------|---|------------------------------|------------|
| Motor type | | AC induction motor | | |
| Motor peak | | 27HP | | |
| Power battery pack voltage | | 48VDC 12.4kw/H | | |
| Single battery parameter | | 6V/280Ah@20hr | | |
| Controller | | 450 - Amp Sevcon GEN4 controller with multi-mode driving and regenerative braking | | |
| Max.speed | | 25 MPH (40.2 km/h) | | |
| Range (in Max Range mode on flat ground) | | 50 miles (80.5 km) (may vary with driving conditions) | | |
| On-board charger | | Delta Q 120-volt AC input; 48-volt DC output | | |
| Charge time | | 8 hours (dependent on depth of discharge) | | |
| Main gearcase | | Direct drive with low-noise gears | | |
| Wheels, Drive system | | 2WD or 4WD | | |
| Front Differential lock | | Electric control: switch | | |
| Multi-mode switch | | L/M/H (Low/Max Range/High) | | |
| Brakes | Front/Rear | | Hydraulic disc brake | |
| | Parking brake | | Axis brake, pedal-braking | |
| Steering | | Mechanical | | |
| Suspension | Front | | Independent, Dual A-arm type | |
| | Rear | | Independent, Dual A-arm type | |
| Dimensions | Length | | mm(in.) 2720 (107.09) | |
| | Wide | | mm (in.) 1550 (61.02) | |
| | Height | | mm (in.) 1885 (74.21) | |
| | Front centers tread | | mm (in.) 1350 (53.15) | |
| | Rear centers tread | | mm (in.) 1300 (51.18) | |
| | Wheelbase | | mm (in.) 1850 (72.83) | |
| | Ground Clearance | front axle | mm (in.) | 285(11.22) |
| | | rear axle | | 265(10.43) |
| Turning diameter | | m (ft) | 6.84 (22.44) | |
| Max. rolling weight (Towing Capacity) | | kg (lbs.) | 363 (800) | |
| Payload capacity | | kg (lbs.) | 389 (857.5) | |
| Weight | | kg (lbs.) | 824 (1816.6) | |

| Model | | Specification | |
|------------|--|-----------------------------|--------------|
| Cargo bed | Width | mm (in.) | 1305 (51.38) |
| | Length | mm (in.) | 775 (29.72) |
| | Depth | mm (in.) | 285 (11.22) |
| | Volume | m ³ (cu.ft.) | 0.23 (8.11) |
| | Bed height (unloaded) | mm (in.) | 927 (36.50) |
| | Cargo bed capacity (1 row/2 row) | kg (lbs.) | 227 (500) |
| Tire | Front | 26×9-14 6PR 20psi (138kPa) | |
| | Rear | 26×11-14 6PR 20psi (138kPa) | |
| Body color | | Red, White, Blue, Camo | |

NOTE:

- The values in “Ground clearance” and “Weight” are those of the machine equipped with the tires in the table above.
- The company reserves the right to change the specifications without notice.

AXIS

OFF-ROAD



AXIS OFF-ROAD

310 E. UNIVERSITY DR.

McKINNEY, TX 75069



@AXISOFFROAD

FOR QUESTIONS REGARDING YOUR
PRODUCT, PLEASE CONTACT US AT:
(972) 446-0760 OR WWW.AXIS-OFFROAD.COM

COPYRIGHT © AXIS OFF-ROAD. ALL INFORMATION CONTAINED WITHIN THIS PUBLICATION IS BASED UPON THE LATEST PRODUCT SPECIFICATIONS AND INFORMATION AT THE TIME OF PUBLICATION. BECAUSE OF THE CONSTANT ENHANCEMENT IN THE QUALITY AND DESIGN OF PRODUCTION COMPONENTS, MINOR DISCREPANCIES MAY VARY BETWEEN THE ACTUAL VEHICLE AND THE INFORMATION PRESENTED IN THIS PUBLICATION. NO LIABILITY CAN BE ACCEPTED FOR OMISSIONS OR INACCURACIES. ANY REPRINTING OR REPRODUCTION, WHETHER WHOLE OR IN PART OF THIS PUBLICATION IS STRICTLY PROHIBITED.